

# Watson & Hillhouse

*Unrivalled Service in Piling Equipment Supply Since 1972*



2018

Inside this issue:

## **NEW ADDITION TO HIRE FLEET**

WOLTMAN 55DR DEDICATED CFA/SOIL DISPLACEMENT RIG

## **FIRST BELL DREDGE PUMP HIRE**

AXMINSTER EXCAVATORS

## **STAFF NEWS**

UPDATES FROM OUR HQ

## **PICTURE GALLERY**

EQUIPMENT ON HIRE





## Welcome - from the Managing Director

Welcome to the latest edition of the Watson & Hillhouse newsletter.

It's been another busy year with the Thames Tideway Tunnel project in particular keeping our Ipswich hire department very busy. Other sectors that have also consumed a lot of our conventional piling equipment this year are ports and harbours and flood alleviation. In terms of overall plant utilisation, 2018 has been quite exceptional, with our hire departments in Ipswich and Warrington bringing in equipment from our overseas suppliers to meet demand.

In our last newsletter, we reported on two new agencies - Woltman piling and drilling rigs and Bell Dredging Pumps and our commitment into new areas of business are proving to be a success. You can read more about that within these pages.

It's been another good year for Still Worker sales with two new machines sold to UK companies (more below) and three overseas sales; one in The Netherlands and two in Poland.

We hope you enjoy reading this edition and look forward to your ongoing support.

*Phil Bell*



## Still Worker Sales

Sheet piling specialists, Fussey Piling, pride themselves on having a well-maintained fleet of the latest sheet piling equipment available and regularly update their Still Workers to ensure they are able to meet the demands of modern construction sites.

This is their eighth new Still Worker WP-150 and is packed full of the latest features to ensure they are up to date with site requirements including no working at height, and the exclusive mast tilt/self leveller for fast, precision piling.



Sheet Piling (UK) owns and operates a comprehensive range of specialist modern piling equipment in order to deliver innovative sheet pile solutions to a wide range of sectors.

They have added another Euro stage IV compliant Still Worker ZU-100 to their pile pressing fleet - their second in two years.

The stage IV engine with low noise levels of just 69db and biodegradable hydraulic oil make their latest acquisition an environmentally friendly asset.





## Woltman 55DR CFA Rig Added to Hire Fleet

On the front cover we feature our brand new Woltman 55DR dedicated CFA/soil displacement rig which arrived in June. It came in and went straight out on site the next day and has been on hire continuously ever since!

With an impressive 250 kNm torque rotary, it has been outperforming the competition on site and we have had some really good feedback.

The rig not only complies with the latest statutory requirements for piling equipment, including emissions regulations, but has also been spec'd in terms of operator usability, the environment and site safety:

- Euro stage IV/Tier 4F engine
- Max drill depth 26m without Kelly extension
- Extendable counterweight with outriggers (low ground bearing pressure)
- Hydraulic foldable leader system
- NDT PL3000 pile monitoring system
- 360° camera system
- 3-point cab access and handrail



## M&CCE 2018

We recently exhibited at the Marine & Coastal Civil Engineering Expo (M&CCE Expo) which had a change of location - moving from Excel, London to NEC, Birmingham.

This free to attend show is an exhibition and conference dedicated to showcasing the latest equipment and solutions for marine, coastal and other challenging civil engineering projects.

We were promoting all our equipment but specifically the Bell range of dredging equipment. We had a Bell 100 fitted with a cutter head on the stand whilst a Bell 250 with sand production head was attached to a Waitings Drainage excavator to make quite a feature in the exhibition hall.

We will be attending again in 2019 and hope to see you there!



# FIRST HIRE OF BELL DREDGING PUMP IN UK

In March this year we undertook the first of many hires for the Bell range of dredging pumps. The following is, director, Sam Voysey's account of the hire to Axminster Excavators on the south coast:



*'This job had no access to the working area with normal tracked machines, so expensive vessel hire (landing craft) would be required to deliver it or carry the plant whilst working (barge). We have used both of these systems in the past. Although a floating vessel is good for deep water, the owner usually gets very nervous when the water gets shallow. Alternatively a tracked excavator is perfect when the tide is out but when it comes in, it has to stop. Our amphibious excavator on the other hand can keep going throughout the tidal cycle.'*

*Using the amphibious excavator with spud legs we were able to work from virtually zero depth (the pump needs 0.75m of water) to 7m deep.*

*Matching the Bell pump to our machine was definitely productive - modifying the counterweight structure of the excavator to carry a power pack was challenging as clearances were tight but our workshop was more than capable of this. However, the benefit was that we had a matched system that was independent of the excavator.*

*Control of the pump was easy, working in arcs and moving the excavator in a grid pattern. On this project depth control was not really required as we were tasked to clear down to the bedrock, but a laser or GPS system could be installed for future projects.*

*The output of the pump was good, delivering a good flow that seemed to keep the pipes clear from blockage.*

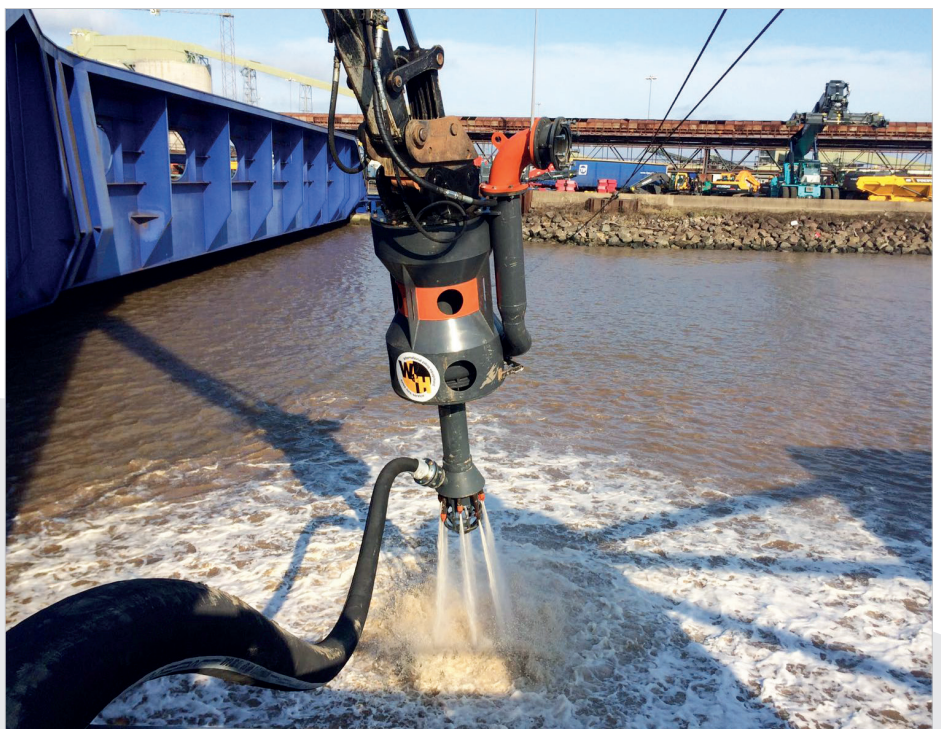
*The combination of the Bell pump and the amphibious excavator gives us a lot of flexibility for example once we had finished the pumping operation we put a bucket on the machine and moved some rocks for the last day, try doing that with a barge dredger!'*





We have since managed other hires including:

- A precision maintenance dredge in the Irish Sea to remove silt from a previously made trench (using other methods) but which then silted up due to stormy weather.
- Ground preparation dredging on the River Thames to ensure absence of explosive devices prior to piling.
- Transfer of animal waste for processing.
- Precision dredging to remove silt from the Thames Flood Barrier sills, without damage, to ensure the continued safe operation of the gates.
- Precision dredging to remove sediment from a damaged cofferdam.





# GALLERY

Here's a small selection of our hire equipment working on various sites all over the UK and Europe this year.



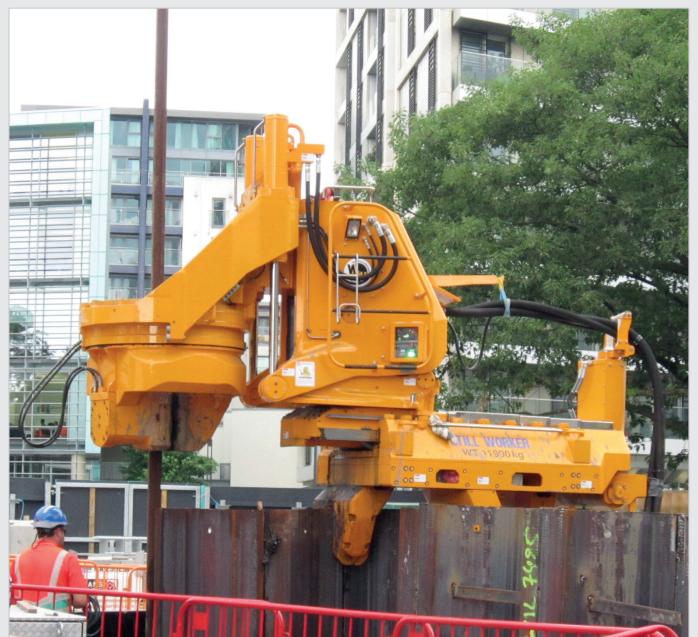
Woltman 40PR installing precast concrete piles



PVE 38M driving a 2.4m tube with bespoke beam and clamp arrangement



Kowan Still Worker ZU-100 pressing 'Z' piles on a canal in the Netherlands



Kowan Still Worker ZU-100 extracting a steel lance after water jetting





PVE 82M installing tube piles for a harbour wall



Two PVE 40VMs driving 'AZ' pairs for a cofferdam



BSP CX110 with wide-cap driving 'AZ' pairs



BSP CG210, with acoustic shroud, driving tube piles



BSP CX110, with acoustic shroud, driving 'AZ' pairs



# WELCOME TO:

We are pleased to introduce the latest additions to the Watson & Hillhouse team:

## Corey



Corey found his previous job no longer challenged him so he went to a careers adviser who suggested plant mechanics and the apprenticeship vacancy at W&H - the rest, as they say, is history.

## Adam



Adam is our most recent and youngest apprentice at Watson & Hillhouse. He came to us straight from school where he had just finished his GCSE's.

## Tanya



Having previously worked at Speedy Hire, Tanya joins the hire department in Ipswich as assistant hire controller. She is helping Scott with all conventional piling hire enquiries.

## Trudie



Trudie has joined us as our new part time receptionist and purchase ledger assistant. She helps Terry with all things accounts payable!

# EXTENDED WORKING

To accommodate our growing team we have extended upwards. On the ground floor the existing workshop rest area has been converted into additional storage increasing our storage area twofold. We also now have a new dedicated electronics and CAD office. The welding area in the main workshop has also been upgraded to include a fire retardant ceiling and new lighting. A new storey has been added which houses upgraded workshop staff amenities including: drying room, toilets/shower facilities, kitchenette and seating area.



**Watson & Hillhouse Ltd.**  
Head Office: Ipswich T: +44 (0)1473 748652  
Northern Depot: Warrington T: +44 (0)1925 265358  
info@w-h.co.uk www.w-h.co.uk

