

# Watson & Hillhouse

*Unrivalled Service in Piling Equipment Supply Since 1972*



Spring 2025



Pictured: BSP CX110 Hydraulic Drop Hammer and ICE 815C Crane Suspended Vibratory Hammer



# WELCOME - from the Managing Director

Welcome to the latest edition of the Watson & Hillhouse newsletter. The industry saw most construction sectors grow during 2024 and for us, both our rental and sales businesses performed well. Whilst the new government promises to ‘kickstart economic growth’, I feel it will be some time before

we see this feed through in the construction sector. Whilst we have seen a slight downturn in our enquiries to one year ago, as we head towards the end of Q1, rental and sales remain strong. We are looking ahead with optimism with a number of large projects in the pipeline set to get underway this year including Sizewell ‘C’.

With this being on our doorstep, we are confident of playing a big role, as we did for Sizewell ‘B’ way back in the 1980’s! I hope you enjoy this edition of our newsletter where you can read about some of the interesting projects we have been involved with.



Phil Bell

## New Equipment Available for Hire

### Further investment at Watson & Hillhouse

It’s been a busy few months here at Watson & Hillhouse and demand for both sales and hire remain strong. As we continually upgrade and renew our fleet, we have made some further investments recently to strengthen our hire offering. The first purchase was a Movax SG-80VA which has been out on several projects already and the

feedback has been very positive. The new ‘variable active’ system enables centrifugal force to be maintained when driving into harder soils. The second investment is another Kowan WP-150 Still Worker to provide silent and vibration free piling. This already has rental bookings in the pipeline as well as serious sales interest.



## INFRATECH 2025

### Showcasing the Future of Piling with Kowan

We recently had the pleasure of exhibiting at Infratech 2025 in Rotterdam, a leading international trade fair for infrastructure and construction. Our focus at the exhibition was on showcasing the latest innovation from Kowan: the NEW zero emission, electric power pack which will power the full range of Kowan noise and vibration-free pile pressing machines.



This exciting development marks a significant step forward in sustainable piling. The NEW Kowan fully electric power pack will have an onboard 160kWh battery which powers the electric motor and only requires a 50KVA supply to provide a constant charge for the battery. This can come from either the grid, a stand-alone battery pack or a small 70-100KVA generator. The electric power pack delivers the same impressive performance as the diesel

version, while significantly reducing emissions and noise pollution. This makes it an ideal solution for urban projects where environmental considerations are paramount. As a leading supplier of piling and foundation equipment, we are committed to providing

our customers with the most advanced and sustainable solutions available. Infratech 2025 provided an excellent platform to showcase this innovative technology and connect with industry professionals from across Europe. We were delighted to see the strong interest from

visitors at our stand. Many were impressed by the potential of this technology to revolutionise the way we approach piling and foundation work. If you’re interested in finding out more, give us a call on 01473 748652 or drop us an email at [info@w-h.co.uk](mailto:info@w-h.co.uk).

## Competition Time

### How would you like to win a bundle of Watson & Hillhouse goodies?

We’re looking for spectacular photos of our equipment to feature in our 2026 desk calendar. The images should showcase our equipment and capabilities with bonus points for including a well-known landmark. You can submit your high resolution photos up to the 31st October 2025 by emailing them to [info@w-h.co.uk](mailto:info@w-h.co.uk). If your photo gets used in our calendar, we’ll send you some fantastic W&H goodies as a thank you.

By entering our competition, you will be giving us approval to use your image and you’ll also receive bragging rights if it gets selected!





# Tricky Site? No Problem!

Our team is always up for a challenge, so when we got a call from our dealer, Lesanco ApS in Denmark, saying they needed a silent sheet piling press for a site with tricky access, we were ready to spring into action.

We were contacted by Lesanco who were working on a project to build a summer house on a hill where the ground was very tough. After various discussions, it was agreed that the Kowan ZU-100 Still Worker silent pile press was the best solution for the job. To assist pile installation

in the tough soil conditions, we calculated that in-situ water jetting would be required.

The site required 111 piles, of varying length, to be installed as a retaining wall for the construction of the new summer house.

The equipment was fully prepared by our qualified engineers in our specially equipped workshop in Ipswich.

The Kowan Still Worker and accompanying equipment was transported to Denmark, where a mobile crane lifted it into

position up on the hill. The piles were successfully installed by an operator supplied by Watson & Hillhouse. The equipment was then craned back off the hill and onto transport to make its way home to England.



## Uber Boat by Thames Clippers



We're delighted to have supported Red7Marine in the construction of London's first all-electric ferry terminal. Red7Marine, a leading marine contractor, is currently working on behalf of Uber Boat by Thames Clippers to install a new pier at Rotherhithe and extend an existing berth at Canary Wharf, ready for the launch of Orbit Clipper, the first all-electric ferry on the River Thames.

Orbit Clipper will provide frequent passenger services between Canary Wharf and Rotherhithe, with the aim of carrying up to 20,000 passengers per day. This project is part of the Clean Maritime Demonstration Competition

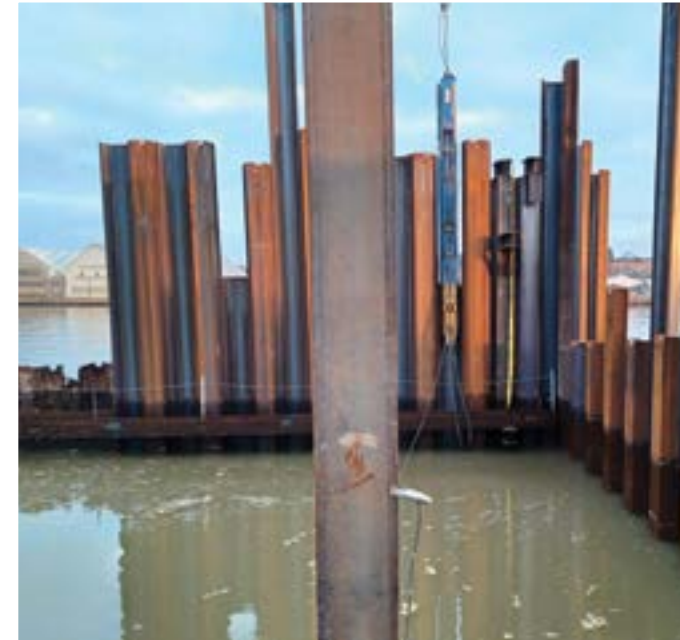
(CMDCC), which supports the development and deployment of clean maritime solutions.

The project has involved various stages, including dredging, proof digging, and piling works. Watson & Hillhouse provided a Junttan HHK14/16S hydraulic impact hammer and PVE 20VM vibratory hammer to Red7Marine for the installation of the berthing piles at the Rotherhithe site. Red7Marine is utilising a Haven Seariser 4 vessel, equipped with a custom-designed and fabricated piling gate, for these operations.

We are proud to contribute to the advancement of clean maritime transportation in London.

# Quay to Success

## Frindsbury Eurowharf, Rochester



We were pleased to support Southbay Civil Engineering Ltd with their recent project at Frindsbury Eurowharf in Rochester, Kent.

The project included constructing a new front sheet pile quay wall, installation of a new anchor wall, removal of existing front sheet pile wall and installation of new fender panels and energy absorption.

Watson & Hillhouse provided a PVE 2316VM variable moment crane suspended vibratory hammer and a BSP SL30da hydraulic impact hammer.

The work will be completed in two stages so that half of the wharf is operational at all times to avoid disruption.

This project highlights the variety, versatility and reliability of the equipment available from Watson & Hillhouse and, in particular the ability of the BSP SL30da to drive down between adjacent sheet piles.

We are proud to support our customers with the tools they need to achieve project success.

## Watson & Hillhouse Equipment Supports Piling Projects on the Tyne

Watson & Hillhouse has supplied a range of equipment to support the successful completion of several key piling projects on the River Tyne. These projects, undertaken by Southbay Civil Engineering Ltd, have showcased the versatility and effectiveness of our equipment across a variety of challenging marine environments.

**Swans Energy Park:** For the construction of the front combi-wall and bearing piles at Shepherd Offshore Group's Swans Energy Park, Watson & Hillhouse supplied an ICE 815C vibratory hammer for initial installation. This was followed by a Junttan HHK16S hydraulic impact hammer for driving the front wall tubes into the underlying sandstone. A BSP CX110 hydraulic impact hammer was also utilised for the installation of the bearing piles.

**Tyne Dock Enterprise Park (TDEP):** Currently underway, this project involves the construction of a new heavy lift quayside within the Port of Tyne's Tyne Dock Enterprise Park (TDEP). Given the ground conditions and the required toe restraint for the front wall, a "drill-drive" method was chosen. Watson & Hillhouse supplied a PVE 40VM crane suspended vibratory hammer and a BSP CX110 hydraulic impact hammer for the initial stages of pile installation. These projects demonstrate the commitment of Watson & Hillhouse to providing our customers with the highest quality equipment and the expertise to assist our clients from tender stage to project completion.





# Skilled Movax Operators

As MOVAX's exclusive UK & Ireland dealer, we have several pieces of equipment in our hire fleet. Below shows just some of the skill of our experienced Movax operators.



Circular cofferdam using an SG-75V Side Grip vibrator and DH-25 impact hammer



DH impact hammer and Side Grip night time rail project



A tight squeeze



Marine project



Back driving with a DH-25 impact hammer



MPL-300 pre-augering ahead of sheet pile installation

# Pier Pressure

## Watson & Hillhouse Equipment Supports New HS2 Viaduct

Watson & Hillhouse is pleased to have supplied equipment that contributed to the construction of the 515-metre-long Edgcote Viaduct on the HS2 C3 route. This significant project involves the creation of a viaduct carrying HS2 mainline trains over the River Cherwell floodplain. Sheet Piling UK, a leading provider of piling solutions, was

contracted by FC Civils Solutions to undertake extensive cofferdam construction and installation work. This involved the construction of numerous cofferdams to facilitate the construction of the viaduct piers and abutments.

To support this challenging project, Sheet Piling UK utilised

several pieces of equipment from the Watson & Hillhouse fleet.

A PVE 52M crane suspended vibratory hammer, which was chosen for its high amplitude, efficiently installed the sheet piles in challenging ground conditions.

A BSP CX110 hydraulic impact

hammer was utilised for final driving of the sheet piles to the required depths.

Sheet Piling UK also employed their own Movax SG-60V Side Grip and DH-25 impact hammer on the projects - equipment sold to them by Watson & Hillhouse as the UK & Ireland's exclusive Movax dealer.



Image courtesy of Sheet Piling UK



# Welcome to Watson & Hillhouse

Brandon



## Plant Fitter

Brandon joined us after leaving the military, with just over a decade of experience as a Royal Engineers fitter, working on various plant equipment and HGVs.

Brandon enjoys skydiving and fast cars.

Kye



## Apprentice Plant Fitter

Kye is our newest apprentice at Watson & Hillhouse. Kye is getting to grips with working in a mechanical environment and enjoying learning from our time-served engineers. In his spare time he plays pool and a lot of golf!

## Watson & Hillhouse Recognises Ricky Dade's 25 Years of Service

We are pleased to recognise Ricky Dade on the occasion of his 25th anniversary with Watson & Hillhouse.

Ricky joined us in 1999 as an Apprentice Service Engineer, gaining valuable experience in the maintenance and repair of our equipment. Qualifying as a Service Engineer in 2004, Ricky has since been promoted to his current role as Customer Support and HSE Manager.

In this role, as well as Health & Safety, Ricky is also responsible for providing timely and effective support to our customers, including troubleshooting equipment breakdowns and overseeing the efficient distribution of parts globally.

We appreciate Ricky's enormous contribution to the success of Watson & Hillhouse and look forward to his continued contributions in the years to come.



Ricky Dade is pictured receiving his 25-year service award from Managing Director, Phil Bell.

### Watson & Hillhouse Ltd.

Head Office: Ipswich T: +44 (0)1473 748652

Northern Depot: Warrington T: +44 (0)1925 265358

info@w-h.co.uk www.w-h.co.uk

