

# Watson & Hillhouse

*Unrivalled Service in Piling Equipment Supply Since 1972*



Winter 2023

MOVAX Special



Pictured: The Movax MPL-300 for multi-functional use; sheet pile vibrator, pre augering, CFA and impact hammer.



# WELCOME - from the Managing Director

Welcome to the latest edition of the Watson & Hillhouse newsletter.

As has been widely reported, it has been a difficult year for UK construction with mixed performance across all sectors with rising interest rates, material and labour costs all attributing to the poor performance. In addition, the cancelling of the northern section of HS2 is another major blow. Whilst we are not immune from this, thankfully there continues to be significant investment, both public and private in the ports and harbour sector which is an important market segment for our rental

business (project examples are covered in this newsletter). The activity in this sector has remained very high this year, enabling us to continue our fleet investment adding more hydraulic hammers, vibrators and the ongoing upgrading of our power pack fleet to stage 5 emission standards. We can now boast the largest fleet of conventional piling equipment in the UK with more than 70 items of piling plant.

It's been another busy year for new equipment sales, with Still Worker sales both here in the UK and Europe and Movax sales across the UK and Ireland.

Let's hope the positive forecast for 2024 comes to fruition.

I hope you enjoy reading our newsletter and I would like to take this opportunity to thank all our customers and suppliers for their continued support during 2023.



*Phil Bell*

## STONE THE CROWS

We were recently approached by GeMech Ltd, ground engineering solutions specialists, who had been contracted to install 98 vibro stone columns beneath a proposed new service station in Peterborough.

Although GeMech own purpose built rigs specifically designed to install vibro stone columns, they chose to build their own hybrid model on a Hyundai HX380 crawler base for reasons of costs and ease of access on smaller sites.

GeMech considered a number of vibratory hammer options

but chose to invest in an **ICE 1223B hammer** from Watson & Hillhouse as it provided the right amount of power at the right weight and dimensions for the base machine, as well as the right amount of energy for the design to be efficient and a cost-effective stone column solution.

John Garner, Group Managing Director of GeMech said *"It was good to have a dealer in the UK who effectively became part of the development team and continued to advise us through the build process."*



## MOVAX PRACTICAL DAYS 2023



Our Managing Director - Phil Bell and Operations Manager - Joe Manning recently attended a Movax demonstration event hosted by Movax's German dealer Kiesel at their Coreum facility near Frankfurt.

More than 300 visitors from around the world were there to see the Movax equipment in action. This annual event showcased the entire Movax product range; side grip vibratory pile drivers, piling hammers, piling drills, multi-tool piling leaders, and the manipulator, as well as the Movax control systems and Movax information management suites. Guests were also treated to a demonstration of the new SG-80VA Variable Active side-grip vibrator, with 3 units being purchased.

One of the highlights was the demonstration of the Movax KB-70 rotary kelly bar drill, suitable for work in confined spaces and with limited headroom.

Watson & Hillhouse hosted several guests from the UK & Ireland who were able to see the range and capabilities of the Movax equipment for themselves.

Demonstrations ran for both days and Phil and Joe, along with representatives from Movax, were on hand for our guests to answer any questions that they might have.

If you're interested in attending next year's event, please get in contact and we'll let you know as soon as we have the details.



Movax KB-70L

## WHAT'S NEW - SERVICE, SERVICE, SERVICE!



We pride ourselves on the customer service we offer to our customers and this includes reacting to call-outs and breakdowns quickly so that your downtime is minimised.

Our team of skilled out-workers need vans and tools they can rely on. This month we took delivery of our new fleet of vans, which included an additional vehicle. These are now waiting in our yard for wrapping and racking to be installed.

Another investment to keep us at the top of our game!



# From Strength to Strength

Rental will always be our core business and from which everything else flows. 2022 was a great year for Watson & Hillhouse and 2023 has been even stronger. Our rental fleet continues to be busy on sites right across the UK & Ireland, here are just a few of our recent projects.

## Govan Partick Bridge, River Clyde



The Govan Partick Bridge project forms part of a £29.5 million development including the construction of a new pedestrian/cycle bridge over the River Clyde between Water Row in Govan and Pointhouse Quay in Partick.

Our longstanding customer, Farrans, were awarded the contract, where our piling equipment has been used to extend the quay wall. This will increase Pointhouse Quay to form the north bridge landing.

The piles are 23 metres long and weigh four tonnes each. The piles were been driven 14 metres below the riverbed level.

A cofferdam was constructed using sheet piles, allowing Farrans to safely dewater the area ready for construction of the South Pier.

The equipment used on this project was vast and included **BSP CX85, CX110 and SL30 hammers, PVE 52M, 40VM, 2319VM, 25M and 2316VM and an ICE815C.**

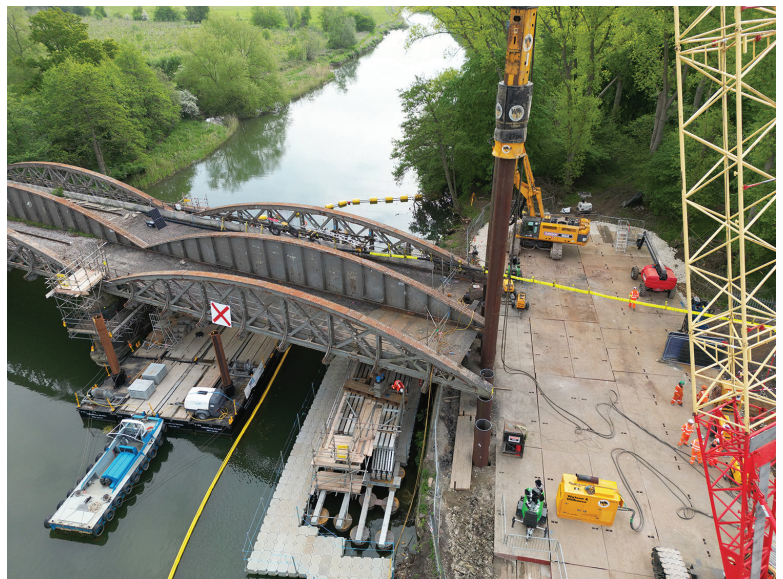
## Nuneham Viaduct Repairs, Abingdon-on-Thames

Nuneham Viaduct, near the town of Abingdon-on-Thames, was forced to close in April 2023 after it was flagged as unsafe. The steel structure was originally put in place in 1909 with the original viaduct built in the 1840s. The abutment had recently started to fail and a solution was required. The line which runs between Didcot and Oxford carries 100+ passenger services and 40 freight trains a day was found to have significant movement in the viaduct, also.

The project needed to be actioned swiftly to avoid long-term delays/impact for the railway's users. Watson & Hillhouse was contacted by our client Dawson-Wam to

provide a **BSP CX hydraulic drop hammer and power pack**. The hydraulic drop hammer was used to drive 24, 15m tube pile supports into the riverbed. These were installed 10 metres deep so that the bridge could be held in place while a new abutment was built.

Once the bridge was "jacked" up, the embankment was removed, and eight tube piles were driven 20m into the ground to support the new bridge. These were capped, and a cill was placed on top to give a platform for the bridge to be connected to. A further 12 piles were driven to hold the embankment back and then a row of sheet piles to stop the embankment drifting off



to the side.

The 150-tonne bridge was then lowered onto the new abutment and the railway tracks and cables were put back in place.

A team of approximately 800 worked nearly 60,000 hours over ten weeks to repair the viaduct, a project that would normally have taken around 3 years to develop a solution and complete.



## Deep Water Terminal, Stornoway, Outer Hebrides



McLaughlin & Harvey was awarded the project at the main port in Stornoway, Outer Hebrides, to create a Deep Water Terminal. This would provide modern facilities for a variety of sectors including energy and transport industries. The transformation would enable the port to accommodate on and offshore wind farm vessels, as well as berth the largest cruise ships, boosting the island's tourist numbers.

Works included creating a combi-wall to increase the size of the berth. McLaughlin & Harvey achieved this with one of our **PVE82M** and **PVE52M vibratory hammers** and **BSP CG240 and CG300 hydraulic hammers** to install sheet piles and tube piles.

## Hornsea Offshore Windfarm, East Anglia

Watson & Hillhouse provided a **PVE 40VM vibratory hammer** to our client Red7Marine to install piles for three nearshore artificial nesting structures along the East Coast of England. Two of these are located 1km from the shore of South Beach, Lowestoft and the third 1.4km from the shoreline of RSPB Minsmere Nature Reserve. The nesting boxes were part of an ecological compensation measure for the Hornsea Offshore windfarm, for the protection of black-legged kittiwakes.

Each structure had a monopile foundation weighing more than 30 tonnes. This was embedded 30 metres below the seabed. The monopile was lifted from Red7Marine's jack-up-barge using the vibratory hammer to install the pile to tolerance. Each nesting box has approximately 500 nesting spaces and have been designed to replicate the cliffs where they would naturally nest.



## Cabling Onshore for Offshore Windfarm, Norfolk



Volker Fitzpatrick has been appointed by Orsted to install the onshore cabling for Hornsea 3 offshore windfarm. The cabling will connect the offshore windfarm to Norwich's Main National Grid Substation with the cabling coming onshore at Weybourne, Norfolk. Once complete, Hornsea 3 will produce enough renewable electricity to power 3.2 million homes.

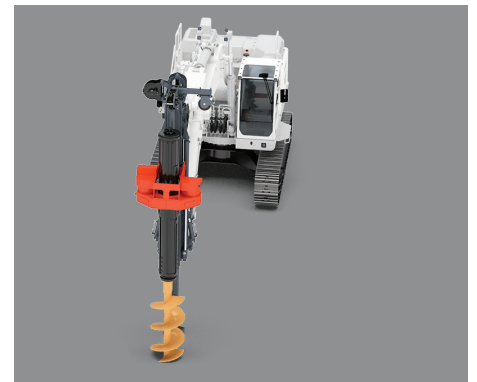
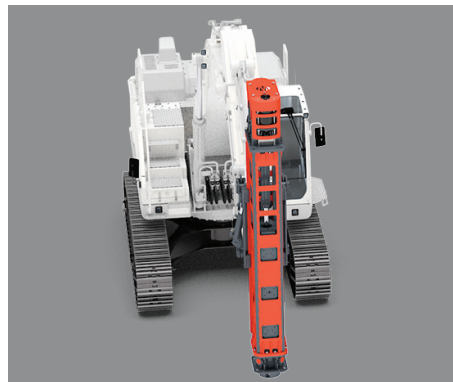
Watson & Hillhouse provided a **Movax SG-75V side grip and excavator** to install sheet piles to be used as an anchor

for a directional drill. The drill will create holes underground for the cabling to pass through, without the need to dig a trench. This enables work to be carried out underneath roads, railway lines, oil and gas mains and waterways.



# Mighty MOVAX

As MOVAX's official UK & Ireland dealer, we are so confident in the MOVAX brand and their products, that we have several of them in our own rental fleet to give our clients the chance to "try before they buy".



## Side Grip Pile Drivers

**Side Grip Pile Drivers (SG)** are the optimum solution for a wide range of piling requirements and a variety of site and soil conditions - especially when a high-degree of precision is required, and for piling in sensitive environments and when limited space or access is available.

The same unit can handle, pitch and drive piles and is capable of accomplishing the whole process without the need of manual handling or assisting machinery.

## Piling Hammers

**Piling hammers (DH)** are utilised to drive load-bearing piles and to assist in sheet pile driving, even in the most difficult soil conditions.

MOVAX piling hammers are the optimum solution to complete a pile installation after reaching refusal with a side grip pile driver or when load testing is required.

The piling hammers can be mounted directly onto the excavator, a MOVAX Multi-tool piling leader, or third-party piling rig or crane.

## Piling Drills

**Piling drills (TAD/KB)** are designed for cast in-situ and other earth-removal tasks.

MOVAX piling drills are especially suitable for sites with confined spaces and when limited space or headroom is available.



## Manipulators

**Manipulators (MPM)**, are designed for fast, flexible and efficient handling of different kinds of masts, gantries, and poles as well as a wide range of piles. Soft gripping surfaces are available to prevent damage of sensitive surfaces or coatings.

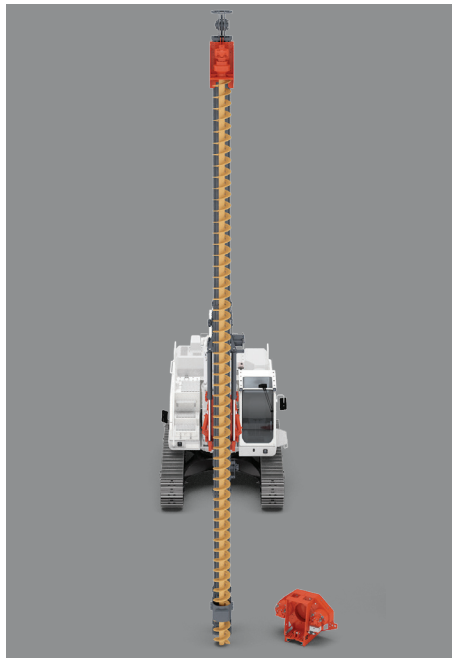
The MOVAX manipulator is designed for superior maneuverability, safety, precision and accuracy.





### MPL-200

**Multi-tool piling leader, MPL-200**, is a multi-purpose piling leader for micro piling designed for small and medium size excavators. Tooling alternatives include vibratory pile drivers, hydraulic hammers and rotary drives for pre-augering.



### MPL-300

**Multi-tool piling leader, MPL-300**, is a multi-purpose piling leader designed for medium to large size excavators. Tooling options include vibratory pile drivers, hydraulic impact type hammers and rotary drives for pre-augering and CFA (continuous flight auger) piling.



### MPL-400

**Multi-tool piling leader, MPL-400**, is a heavy duty, multi-purpose piling leader designed for large size excavators. Tooling options include vibratory pile drivers, hydraulic impact type hammers and rotary drives for pre-augering and CFA (continuous flight auger) piling.



### MSL-300

**Stabilisation leader, MSL-300**, is a column stabilisation leader designed for medium to large size excavators. The MSL-300 can be operated with both wet and dry binder materials.

## MOVAX CONTROL SYSTEM

**The MOVAX Control System, mControl+**, links the carrier (excavator, railroader or equal) with the MOVAX piling equipment and customised solutions. The system controls the auxiliary hydraulics of the excavator which in turn is utilised to control the MOVAX piling equipment.

## MOVAX INFORMATION MANAGEMENT SYSTEM (MIMS)

**The MOVAX Information Management System (MIMS)** provides essential information about the piling process and the pile installation, and about the MOVAX piling equipment itself. The information is intended for maintenance personnel and for the owners, operators and engineers designing and overseeing a piling or foundation project.



# Welcome to Watson & Hillhouse

Michael



## Plant Fitter

Michael "Mike" served his apprenticeship in New Zealand within the hire industry before joining Watson & Hillhouse.

Mike is a huge rugby fan and plays for the Preston Grasshoppers.

Chris



## Plant Fitter

Chris has 25 years' of mixed mechanical experience ranging from tanks for the US Army to forklifts for Jungheinrich.

He loves fast cars and motorcycles.

Amy



## Purchase Ledger Clerk

Amy joins us from a local publishers where she worked in accounts for 10+ years.

Amy is currently studying for her AAT qualification and is mum to two delightful children.

Ricky



## Plant Fitter

Ricky our newest recruit, joined us in October.

Ricky comes from a mixed plant maintenance background and has 25 years experience. He's spent the last decade working for himself.

## A Very Special Birthday at Watson & Hillhouse Ltd

Our Founder and CEO, Mr Robin Watson celebrated his 80th birthday back in May.

We surprised him in the workshop with a rendition of Happy Birthday and a birthday cake along with a gift.

Mr Watson founded Watson & Hillhouse 51 years ago and is still very much involved in the business.

Asked his secret to remaining youthful, Mr Watson said:

*"Working with young and enthusiastic staff!"*



### Watson & Hillhouse Ltd.

Head Office: Ipswich T: +44 (0)1473 748652

Northern Depot: Warrington T: +44 (0)1925 265358

info@w-h.co.uk www.w-h.co.uk

