

Watson & Hillhouse

Unrivalled Service in Piling Equipment Supply Since 1972



KOWAN STILL WORKER

Noise and Vibration Free Environmentally Friendly Pile Pressing Machines

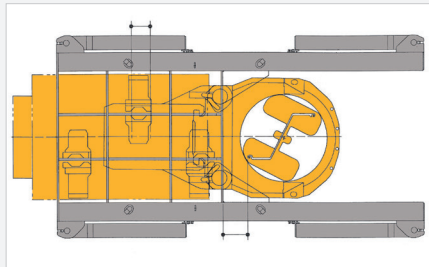
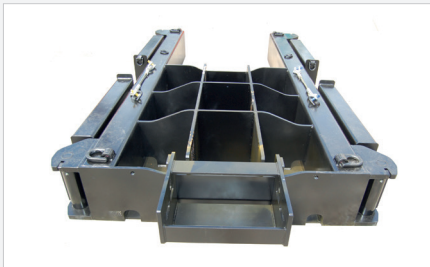
Global Agents - Available for Hire and Sale



Features and Benefits of the Still Worker

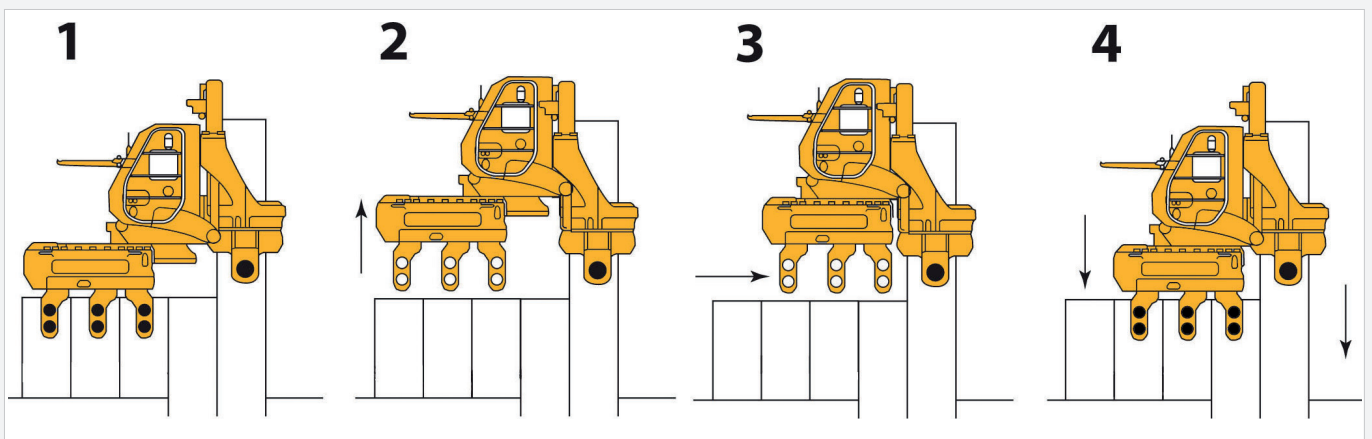
- Virtually noise and vibration free means installation of steel piles as close as 50cm to existing structures or services
- Exclusive mast tilt/self traveller ensures a more efficient safer operation
- Operates at ground level with no piling gates making it a very safe method of operation
- Wireless radio control providing a broad range of vision for the operator and a safe working environment
- Light and compact requiring only a small crane for pile pitching
- Ideal for height restricted sites

Start



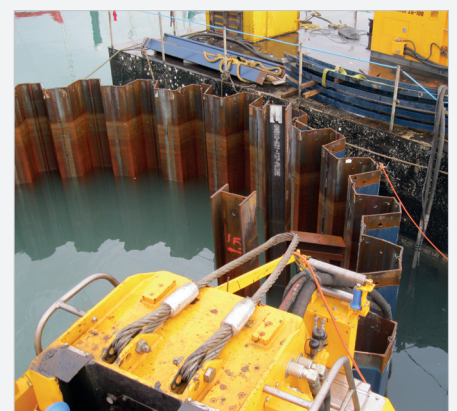
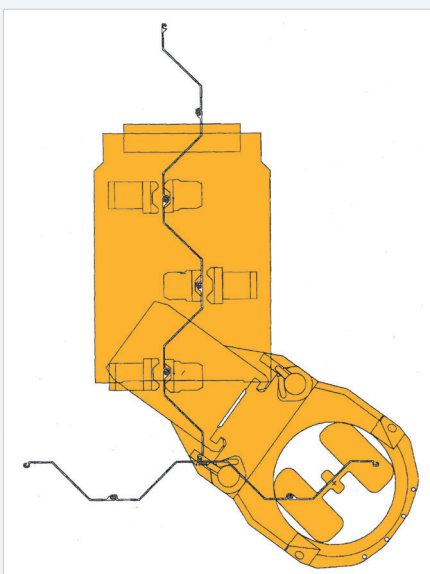
The Still Worker is set on a reaction stand with kentledge in the form of piles, concrete or steel weights. The first four sheet piles are then pressed in from the stand.

Self Travel



The Still Worker moves by elevating its travel carriage while supporting itself on the last installed pile. The travel carriage then slides forward and lowers itself, drops onto the installed sheet piles and continues its hydraulic installation process. After the fourth pile is driven, the Still Worker will have walked off the reaction stand and will be using the installed piles as reaction.

Corners



The Still Worker presses in the dummy piles then uses these to work from, extracting them at a later date.

Mast Tilt And Self Leveller

Exclusive mast tilt function 5 degrees inclination forwards and backwards.



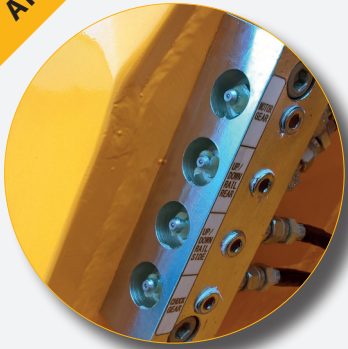
- Mast tilt for precision - Gives the operator an additional correction function for pile verticality and enables working on gradients.
- Mast tilt for productivity - The self travel manoeuvre is fast and efficient; the operator maintains machine verticality after each manoeuvre with the touch of a button.
- Mast tilt for safety - Self levelling eliminates the unsafe practice of chocking up the chassis/clamps with wedges.

Self Travel Support System

Both the ZU-100 and WP-150 are now fitted with the self travel support system (STSS) eliminating the use of the self travel bar.



**NO
WORKING
AT HEIGHT**



Low Level Grease Points

Low level grease points makes daily maintenance easier and safer for the operator.



Low Level Stowage

No "working at height" issues with low level lifting equipment stowage on the power pack and Still Worker main unit.



Mast and slide base protection

The press in force is restricted at the top of the mast, and when the slide base is extended, to prevent excessive wear and damage to prolong the life and reduce owner costs.

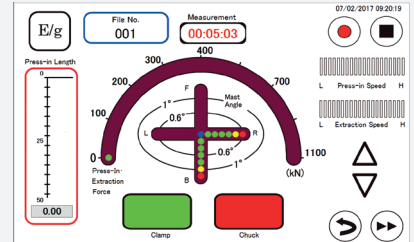
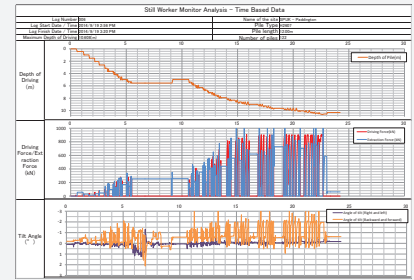
Press-in Force Limiter

Set the required press-in force for the job via the radio control unit to protect from over use and prolong the life of the machine.



Kowan Press-in Monitoring System

- Input soil data; SPT/N values
- Records press-in force - time data
- Records press-in force - depth data
- Records press-in force - mast tilt position - time and depth
- USB data storage
- Digital machine monitor
- Tough pad option
- Printout
- Remote access and live monitoring



MS Engine Speed 1798.5 min⁻¹

| | | | |
|--------------------|--------|----------------|--------|
| Intake Air Temp | 6 °C | DPF Soot Load | 40 % |
| Coolant Temp | 81 °C | DEF Tank Level | 43.2 % |
| Hydraulic Oil Temp | 19 °C | Engine Hour | 25.5 h |
| Battery Power | 27.7 V | | |

Kowan Data Logger

- Chuck up/down position
- Chuck open/closed data
- Clamps open/closed data
- Drive/extraction tonnage

Kowan Power Pack/Engine Data Logger

- Records and monitors engine functions



Options And Features



Standard mode



Water jet mode with water jet reel



Water jet mode with steel lance



Auger crush mode



Hydraulic walk back device



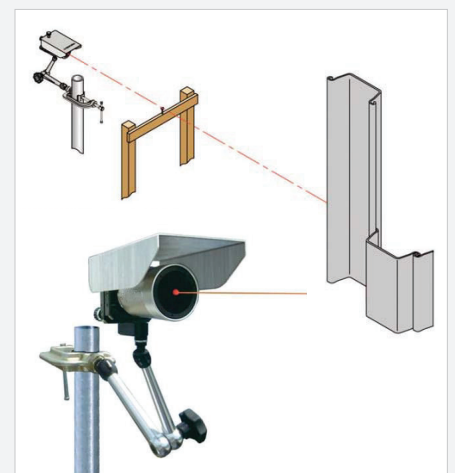
Work over water



Staging for river works



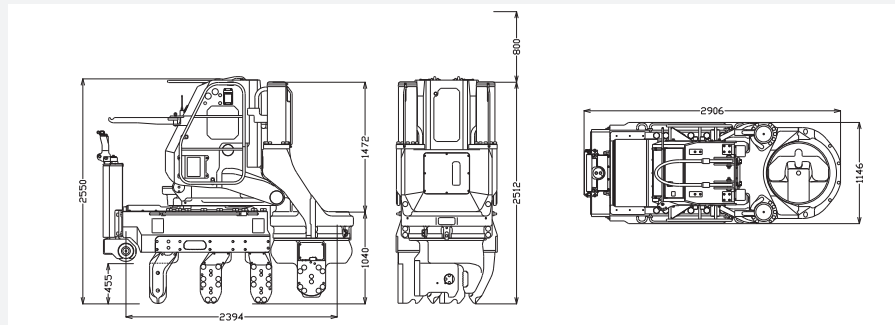
Crawler mounted power pack



Point laser

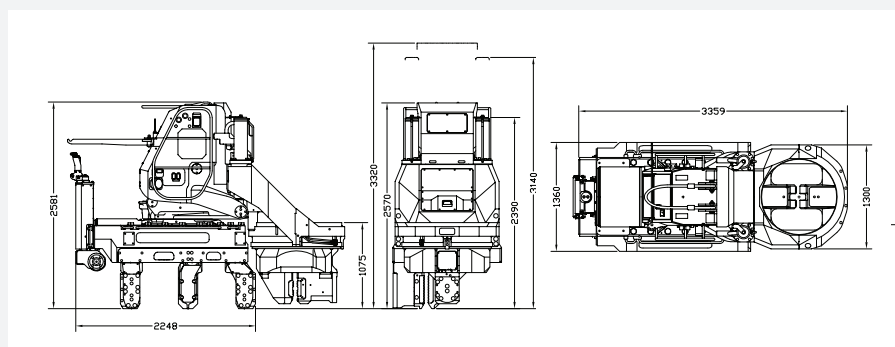
WP-150

| | | |
|------------------------|---------|---|
| Max pressing in force | kN | 1500 |
| Max drawing out force | kN | 1600 |
| Stroke | mm | 800 |
| Pressing in speed | m/min | 1.8-23.0 |
| Drawing out speed | m/min | 1.9-18.0 |
| Tilting device | degrees | +/-5 |
| Mast rotation | degrees | 180 |
| Applicable sheet piles | mm | 'U' 400 - 600 |
| Operation system | | Wireless radio control & cable remote control |
| Moving system | | Self-moving |
| Oil/Greases | | Biodegradable |
| Weight | kg | 9,900 |



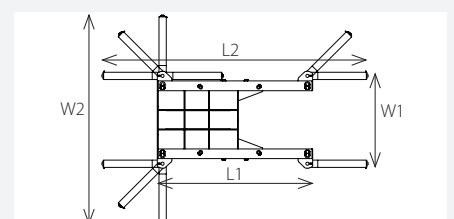
ZU-100

| | | |
|------------------------|---------|---|
| Max pressing in force | kN | 1000 |
| Max drawing out force | kN | 1100 |
| Stroke | mm | 750 |
| Pressing in speed | m/min | 3.0-36.0 |
| Drawing out speed | m/min | 2.4-28.0 |
| Tilting device | degrees | +/-5 |
| Mast rotation | degrees | 180 |
| Applicable sheet piles | mm | 'Z' 575-708 & 'U' 600-750 |
| Operation system | | Wireless radio control & cable remote control |
| Moving system | | Self-moving |
| Oil/Greases | | Biodegradable |
| Weight | kg | 12,260 |



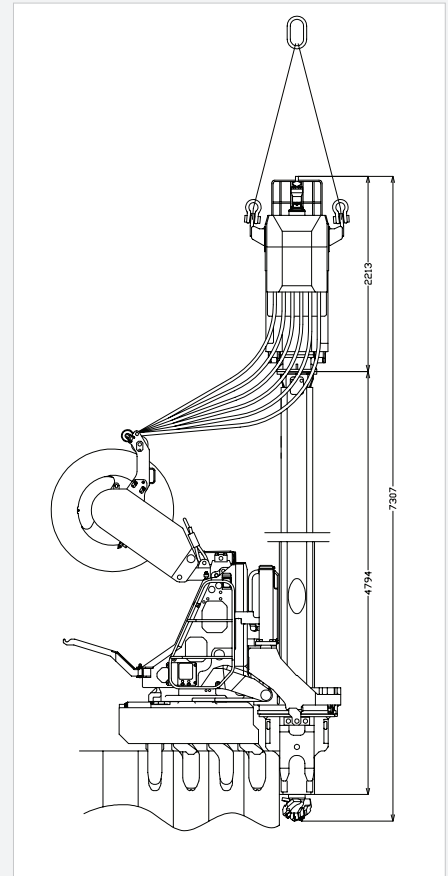
Reaction Stand

| | | WP | ZU |
|-------------|----|------|------|
| Length (L1) | mm | 3200 | 4000 |
| Length (L2) | mm | 5465 | 6385 |
| Width (W1) | mm | 2000 | 2200 |
| Width (W2) | mm | 4220 | 4640 |
| Height | mm | 475 | 462 |
| Weight | kg | 1700 | 2400 |



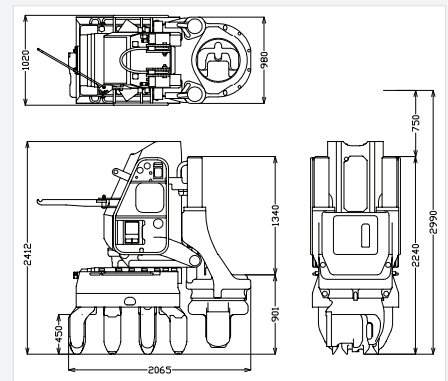
NEO400α with auger crush

| | | |
|------------------------------|-------|------------------------|
| Max pressing in force | kN | 800 |
| Max drawing out force | kN | 900 |
| Stroke | mm | 1000 |
| Pressing in speed | m/min | 4.2-39.0 |
| Drawing out speed | m/min | 3.0-29.0 |
| Positioning control method | | Leader mast tilting |
| Applicable sheet piles | mm | 'U' 400, 500, 600 |
| Applicable tube piles | | N/A |
| Operation system | | Wireless radio control |
| Moving system | | Self-moving |
| Weight | kg | 11,150 |
| Auger | | AC-4700 |
| Applicable sheet pile length | m | 21m (max.) |
| Auger weight | kg | 2000 |
| Casing weight | kg | 7750 pile length 21 m |



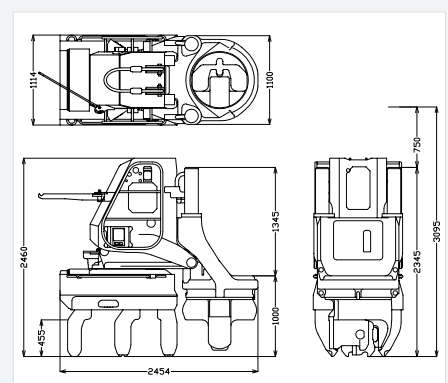
NEO 100

| | | |
|----------------------------|-------|------------------------|
| Max pressing in force | kN | 1000 |
| Max drawing out force | kN | 1100 |
| Stroke | mm | 750 |
| Pressing in speed | m/min | 3.0-36.0 |
| Drawing out speed | m/min | 2.4-28.0 |
| Positioning control method | | Leader mast tilting |
| Applicable sheet piles | mm | 'U' 400 |
| Applicable tube piles | | N/A |
| Operating system | | Wireless radio-control |
| Moving system | | Self travelling |
| Weight 4 Clamp | kg | 5800 |
| Weight 3 Clamp | kg | 5300 |



NEO 100 W

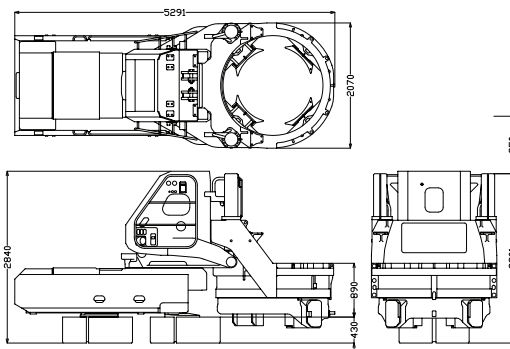
| | | |
|----------------------------|-------|------------------------|
| Max pressing in force | kN | 1000 |
| Max drawing out force | kN | 1100 |
| Stroke | mm | 750 |
| Pressing in speed | m/min | 3.0-36.0 |
| Drawing out speed | m/min | 2.4-28.0 |
| Positioning control method | | Leader mast tilting |
| Applicable sheet piles | mm | 'U' 400-600 |
| Applicable tube piles | | N/A |
| Operating system | | Wireless radio-control |
| Moving system | | Self travelling |
| Weight | kg | 7400 |



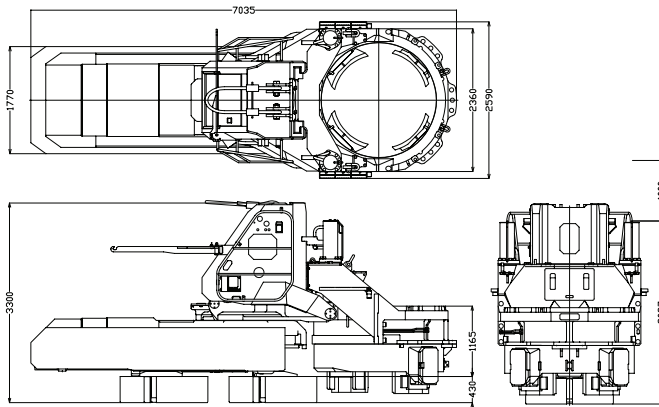
PZ1200 & PZ1500

| | | PZ1200 | PZ1500 |
|----------------------------|---------|------------------------|------------------------|
| Max pressing in force | kN | 1500 | 2000 |
| Max drawing out force | kN | 1600 | 2100 |
| Stroke | mm | 950 | 1000 |
| Pressing in speed | m/min | 1.9-19.0 | 1.1-15.0 |
| Drawing out speed | m/min | 2.0-15.0 | 2.0-10.8 |
| Positioning control method | | Leader mast tilting | Leader mast tilting |
| Applicable sheet piles | | N/A | N/A |
| Applicable tube piles | | ø1000 ø1100 ø1200 | ø1300 ø1400 ø1500 |
| Operating system | | Wireless radio-control | Wireless radio-control |
| Moving system | | Self travelling | Self travelling |
| Chuck rotation | degrees | 48 | 55 |
| Weight | kg | 28000 | 50600 |

PZ1200



PZ1500



Hydraulic Power Pack

| | | KE200C4 |
|--------------------|--------|---------------|
| Power | | Diesel engine |
| Output rating | kw/min | 168/1800 -1 |
| Fuel oil tank | litres | 400 |
| Hydraulic oil tank | litres | 550 |
| Weight | kg | 7150 |

Stage IV Engine

The Still Worker power packs comply with stage IV EU regulations which specify emission requirements for all new non-road mobile machinery.

Bio-oil

The use of ECO friendly Bio hydraulic oil means that any leak or spillage won't cause catastrophic harm to the environment.



All measurements are approximate and are subject to change. Please contact us if you need exact measurements for a specific piece of equipment.



E: info@w-h.co.uk
W: www.w-h.co.uk

Head Office: White House Road | Ipswich | Suffolk | IP1 5NT | T: +44(0)1473 748652
Northern Depot: Lyncastle Road | Appleton Thorn Trading Estate | Warrington | WA4 4RE | T: +44(0)1925 265358