



MOVAX

Total Piling Solutions

MOVAX MPL
MULTI-TOOL
PILING LEADERS

TECHNICAL SPECIFICATION





HIGHER PRODUCTIVITY – SIGNIFICANT SAVINGS

Efficient. Fast. Versatile. Accurate. Safe. Reliable.

MOVAX WAY-OF-PILING

INTRODUCTION

Movax Oy, established in 1993, is a Finnish-based, privately-owned world-leading innovator, developer and manufacturer of excavator-mounted piling and foundation equipment with highly advanced automatic control systems and information management solutions.

A TOTAL SOLUTION

Movax Oy focuses solely on solutions for the piling & foundation industry. The comprehensive range of excavator-mounted piling & foundation equipment and customized solutions cover a complete range of piling technologies - including both driven and bored piles.

UNIQUE, VALUE-ADDING TECHNOLOGY

Movax Oy's piling and foundation equipment provide the optimum way-of-working - **MOVAX WAY-OF-PILING™** - when constructing foundations, building retaining walls, both temporary and permanent, cofferdams and when performing trenching and excavation work and soil stabilisation in a wide range of applications.

QUALITY BUILT-TO-LAST

MOVAX is made with high-class materials, equipment and components – and modern, state-of-the-art production technologies and machinery ensuring the highest possible quality of manufacture. Movax Oy's Quality Management Systems is certified on accordance with ISO 9001:2015.

GLOBALLY PROVEN

With almost **30 years of experience** and more than **3000 units delivered** to all over the world and with a clear focus on the piling and foundation industry, MOVAX has a deep understanding and know-how of varying site and soil conditions - and of all kinds of different type of excavators and rail roaders. Movax Oy's experience also covers a wide range of applications ranging from Rail, Road and Civil to Waterways & Piers, Utilities and Environmental & Energy.

GLOBALLY LOCAL CUSTOMER CARE

Movax Oy focuses on superior customer service and support together with a world-wide network of local partners, established in more than 30 countries all over the world, performing trenching and excavation work in a wide range of applications from civil/structural, rail and road to waterways & piers, utilities and environmental.



INNOVATION & CONTINUOUS DEVELOPMENT

Movax Oy is the inventor of the modular, vibratory side grip pile driver technology. Movax Oy's inventions have resulted in numerous patents (50+) and its trademark, MOVAX®, is registered and well known for the quality it represents all over the world.

Movax Oy is strongly committed to continuously develop its products and services in close cooperation with its customers and local partners.



TOTAL SOLUTION

PILING, FOUNDATION & SOIL STABILISATION

MOVAX excavator mounted piling equipment and customised solutions are available for different piling technologies, including both driven and bored piles, and for varying site and soil conditions and requirements.

The MOVAX Control System links the excavator with the MOVAX piling equipment and customised solutions whereas the MOVAX Information Management System (MIMS) provides essential information about the piling process and the pile installation - and about the MOVAX piling equipment.



PILE DRIVERS

Side grip vibratory-type pile driver for handling, pitching, driving & extracting a complete range of driven piles, including sheet piles, H-beams, tubular steel piles and timber piles.



PILING HAMMERS

Hydraulic, double-acting impact-type piling hammers for driving load-bearing piles or assisting in sheet pile driving in even the most difficult soil conditions.



PILING DRILLS

Telescopic/kelly bar-type piling drills for bored, cast-in-situ (concrete) piles.



MOVAX CONTROL SYSTEM

The **MOVAX Control System (mControl+)** controls all MOVAX piling equipment and customised solutions. The system controls the auxiliary hydraulics of the excavator and all the functions of MOVAX's piling equipment.



MULTI-TOOL PILING LEADERS

Customised multi-purpose piling leaders with tooling including vibratory pile driver, piling hammer and rotary drives for pre-augering and CFA piling.



COLUMN STABILISATION LEADERS

Customised column stabilisation leader for increasing strength, improving deformation properties and to increase stiffness of soft soil.



INFORMATION MANAGEMENT

The **MOVAX Information Management System (MIMS)** provides essential information about the piling process and the pile installation – mLogbook - as well as about the MOVAX piling equipment itself – mFleet Management.



CUSTOMIZED SOLUTIONS

MULTI-TOOL PILING LEADERS

The excavator-mounted MOVAX multi-tool piling leader provides a versatile, multi-tool solution for a wide range of piling requirements in a variety of site and soil conditions, and for different types of piles and piling technologies.

MOVAX MPL multi-tool piling leaders are available with a wide range of tooling for different piling and foundation applications ranging from driven piles to CFA and pre-augering. The leader and its tooling are designed to work on a standard excavator with normal auxiliary hydraulics and are controlled with the MOVAX Control System. An optional stability monitoring system is available upon request.

The MOVAX Information Management System (MIMS) provides essential information about the piling process and the pile installation as well as about the MOVAX piling equipment itself.

MOVAX MPL multi-tool piling leaders are based on a modular concept and always customised to meet customer-specific requirements. MOVAX customises and manufactures three (3) different size MPL multi-tool piling leaders to provide the solution for a wide range of carriers and applications.

Multi-tool piling leader model	MPL-400	MPL-300	MPL-200
Type	Heavy duty, multi-purpose piling leader	Multi-purpose piling leader	Micropiling multi-tool leader (incl. solar piling)
Effective piling length/drilling depth	12 m	12 m	6 m
Tools	Vibratory pile driver Impact-type piling hammer Rotary drive for pre-augers CFA	Vibratory pile driver Impact-type piling hammer Rotary drives for pre-augers CFA DTH	Hydraulic hammer Rotary drive for pre-auger Vibratory pile driver
Mounting (excavator class)	Boom (35-50 ton)	Boom (30-50 ton) Stick (35-50 ton)	Chassis (8-20 ton) Boom (16-30) Stick (23-35)
Control	mControl+ Pro	mControl+ Pro	mControl+ Pro
Information management	mFleetManagement mLogbook	mFleetManagement mLogbook	-

NOTE!

In addition to the multi-tool piling leaders with a standardised effective length/depth, tailor-made leaders are available for vibratory pile driver operation up to a maximum effective pile length of 16 meters. The maximum leader length is dependent on the excavator size and stability.

Multi-tool piling leaders with tooling for MULTIPLE PILING TASKS



MULTI-TOOL PILING LEADERS

MPL-400

FEATURES

- Excavator boom-mounted, heavy duty Multi-tool piling leader
- Tooling alternatives include vibratory pile driver, hydraulic double-acting impact-type piling hammer and rotary drives for pre-augering and CFA
- Suitable for a wide range of piling applications, including driven piles (sheet piles, tubular steel piles, H-beams and precast concrete piles) and bored piles (CFA)
- Multi-tool piling leader and tooling designed to work on a standard excavator with normal auxiliary and bucket hydraulics. All leader related hydraulics are integrated onto the leader itself
- Equipped with a fully integrated service winch for handling of piles and tooling
- Scalable to effective pile lengths/CFA & pre-augering depths between 6 and 12 meters by optional leader section and corresponding augers, pile/auger guides, etc.
- Tooling can be easily changed and the leader can also be attached and detached enabling other usage of the excavator
- Multi-tool piling leader and tooling controlled and operated with the MOVAX Control System, mControl+ Pro
- Stability Monitoring System available as an option
- MOVAX Information Management System for reporting piling works (mLogbook) and monitoring equipment (mFleetManagement)

DISCLAIMER

MPL Multi-tool piling leaders are customised solutions. Hence the features and technical data of a specific MPL delivery might differ from the data presented in this catalogue.



Multi-tool piling leaders for DRIVEN, BORED AND DRILLED PILES



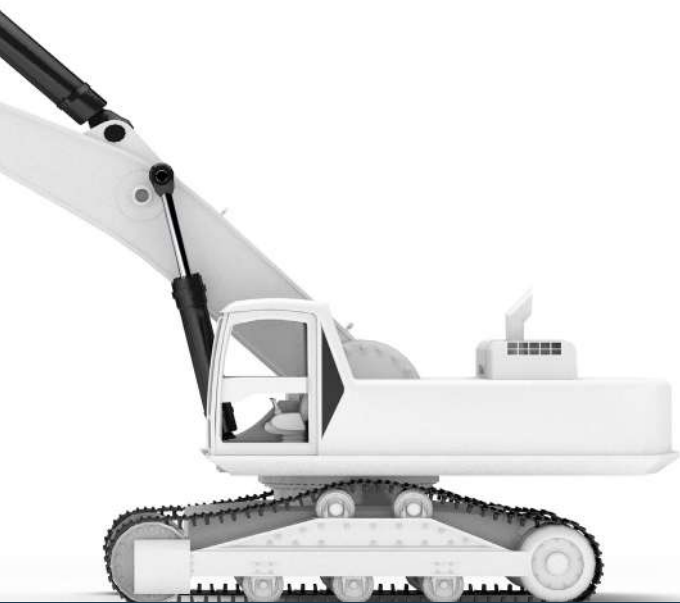
MULTI-TOOL PILING LEADERS, MPL-400

TECHNICAL DATA

Model		MPL-400
Weight (without adapter & tool)	kg	7000–8000
Height	m	15
Forward inclination	°	20
Backward inclination	°	20
Tilt	°	8
Rotation (optional)	°	60
Winches		
Main winch line pull	kN	120
Aux winch line pull	kN	57
Crowd system		
Pull down force	kN	120
Extraction force	kN	120/360
Transport (w/o excavator)		
Length	mm	8700
Width	mm	2900
Height	mm	2900
Weight (w/o tool)	kg	7000–8000
Excavator class*	t	35–50

NOTE!

* depending on tooling; additional counterweight might be required depending on excavator brand & model.



MULTI-TOOL PILING LEADERS, MPL-400 Tooling

TECHNICAL DATA

Piling hammer

Model		DH-35	DH-45
Total weight	kg	4900	5850
Ram weight	kg	3100	4000
Blows per minute	1/min	0-100	0-100
Impact energy	kNm	0-35	0-45
Drop height	m	0-1,2	0-1,2
Total height	mm	4460	4930
Frame width	mm	650	650
Transport width	mm	1200	1200
Transport depth	mm	1870	1870
Oil flow	l/min	80-120	80-120
Operating pressure	bar	250	280
Pressure relief set, max	bar	350	350
Suitable piles			
Sheet piles		U and Z, max length 12 m	
H-beams		up to HEB500, max length 12 m	
Tubular steel piles		up to Ø 508 mm, 12 m	
		up to Ø 762 mm, 12 m	
Precast concrete		up to 250x250 mm, max length 12 m	



Rotary drive for pre-augering

Model		PD-100
Total weight	kg	1000
Torque, max	kNm	100
Drilling speed	rpm	0-40
Connecting pin, hexagonal	mm	130
Oil flow	l/mm	240
Maximum pressure	bar	350
Pre-augering		
Depth	m	12
Hole diameter	mm	300-800



Vibratory pile drivers

Model		TG-120	TG-160
Total weight (transport)	kg	2460	2775
Total weight (operating)	kg	2385	2700
Dynamic weight	kg	1810	2100
Dynamic weight (excl. clamp)	kg	1230	1280
Height	mm	2500	2500
Depth	mm	1330	1330
Width	mm	460/410*	460/410*
Eccentric moment	kgm	12,6	16
Frequency	1/s	2300	2300
Line pull, max	kN	200	200
Amplitude	mm	14,5/20**	15,2/25**
Centrifugal force	kN	718	912
Oil flow	l/min	240	300
Operating pressure, max	bar	350	350
Excavator class	ton	35-50	42-50
Suitable piles			
Sheet piles	U and Z, max length 12 m		
H-beams	up to HEB500, max length 12 m		
Tubular steel piles	up to Ø 508 mm, 12 m		
	up to Ø 762 mm, 8 m		

NOTE!

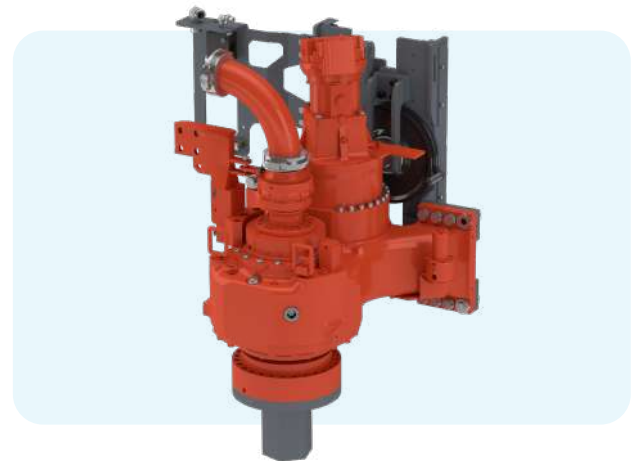
* total/along piling line

** with/without bottom clamp



Rotary drive for CFA

Model		RHP-10
Total weight	kg	1800
Torque, max	kNm	100
Drilling speed	rpm	0-50
Connecting pin, hexagonal	mm	N/A
Oil flow	l/mm	250
Maximum pressure	bar	320
CFA		
Depth	m	12
Hole diameter	mm	300-800



MULTI-TOOL PILING LEADERS, MPL-400

TOOLING & OPTIONS

The MOVAX Multi-tool piling leader MPL-400 is of a modular design and thus suitable for a wide range of applications and piling technologies, including driven piles, pre-augering and CFA. The tooling can be easily and quickly changed and the leader can be modified for any given pile length or pre-augering/CFA depth between 6 and 12 meters to allow for low head room operation.

Tool mounting bracket
for fast and easy change
of tooling.



Piling hammers

MOVAX DH-35 or DH-45
0-35/0-45 kNm
0-100 blows/min
0-1,2 m drop height



Vibratory pile driver

MOVAX TG-120
718 kN | 12,6 kgm
2300 1/s | 14,5/20 mm
MOVAX TG-160
912kN | 16 kgm
2300 1/s | 15,2/25 mm



Pre-auger

PD-100
100 kNm
0-40 rpm



CFA Rotary drive

RHP-10
100 kNm
0-50 rpm



The MOVAX MPL-400 is always customised to meet customer-specific requirements. Technical parameters can be tailored and accessories are available for various tooling and applications.



Main winch 120 kN, available with 12 or 36 ton lifting force (*1x or 3x winch line pull*). Available with optional 5,7 ton service winch for lifting piles, augers and reinforcements.

Mounted directly onto excavator, stick or onto main boom (*depending on excavator class*). Excavator- and mounting-specific adapter included in the delivery.



Available with tool specific accessories; for example CFA auger star cleaner

Available with pile or auger guide for accurate positioning and verticality. Pile clamps either mechanical or hydraulic.



Lead augers and augers are available for different soil conditions and with different diameters.

MULTI-TOOL PILING LEADERS

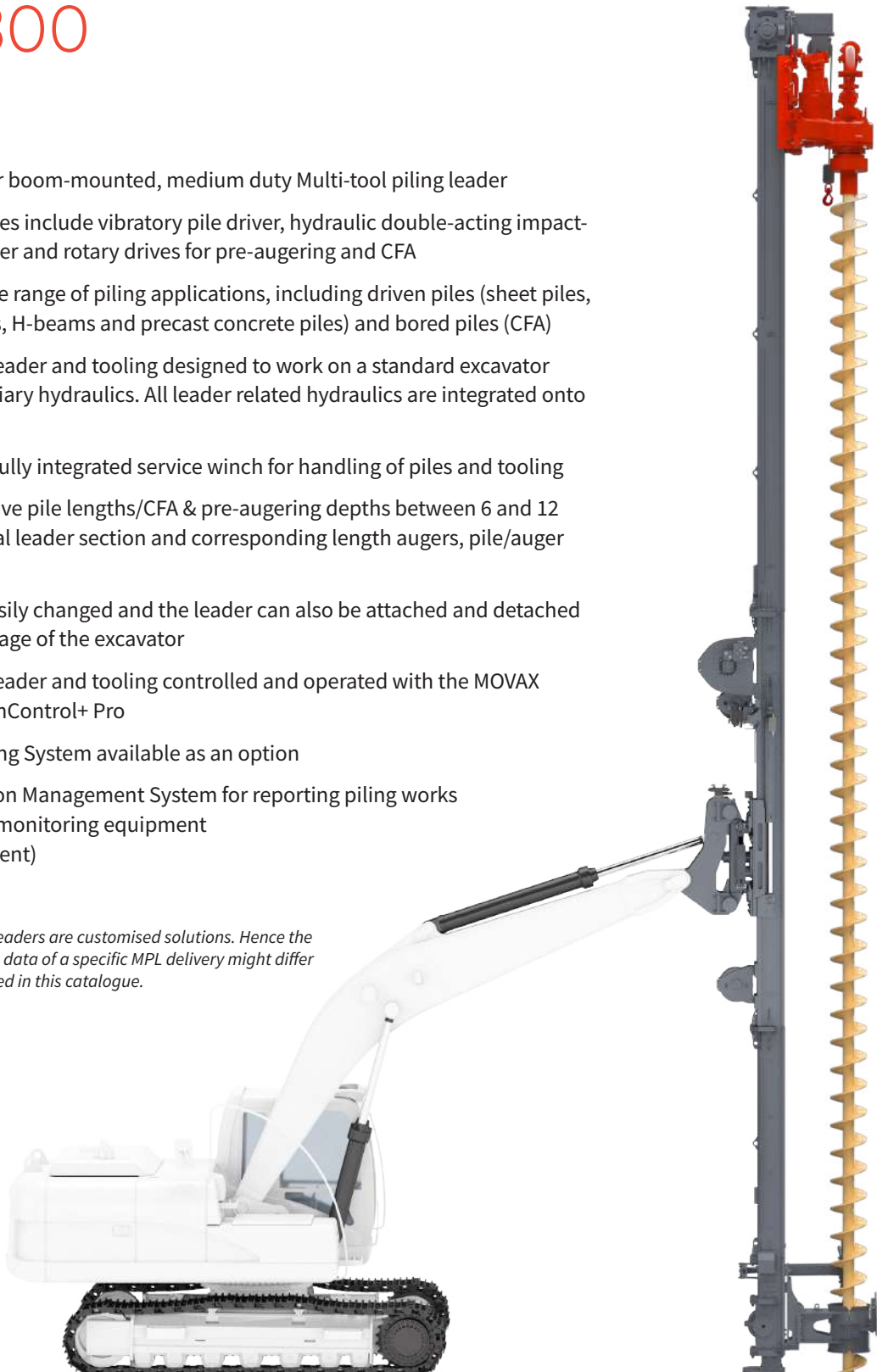
MPL-300

FEATURES

- Excavator stick- or boom-mounted, medium duty Multi-tool piling leader
- Tooling alternatives include vibratory pile driver, hydraulic double-acting impact-type piling hammer and rotary drives for pre-augering and CFA
- Suitable for a wide range of piling applications, including driven piles (sheet piles, tubular steel piles, H-beams and precast concrete piles) and bored piles (CFA)
- Multi-tool piling leader and tooling designed to work on a standard excavator with normal auxiliary hydraulics. All leader related hydraulics are integrated onto the leader itself
- Equipped with a fully integrated service winch for handling of piles and tooling
- Scalable to effective pile lengths/CFA & pre-augering depths between 6 and 12 meters by optional leader section and corresponding length augers, pile/auger guides, etc.
- Tooling can be easily changed and the leader can also be attached and detached enabling other usage of the excavator
- Multi-tool piling leader and tooling controlled and operated with the MOVAX Control System; mControl+ Pro
- Stability Monitoring System available as an option
- MOVAX Information Management System for reporting piling works (mLogbook) and monitoring equipment (mFleetManagement)

DISCLAIMER

MPL Multi-tool piling leaders are customised solutions. Hence the features and technical data of a specific MPL delivery might differ from the data presented in this catalogue.



Multi-tool piling leaders for DRIVEN, BORED AND DRILLED PILES



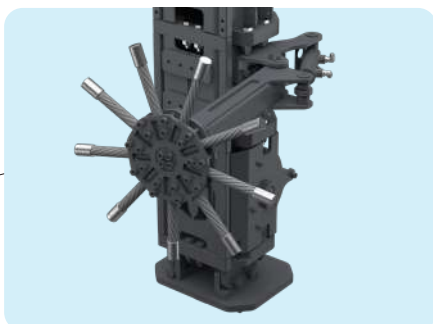
MULTI-TOOL PILING LEADERS, MPL-300

TECHNICAL DATA

Model		MPL-300
Weight (without adapter & tool)	kg	5000-5250
Height	m	15
Forward inclination	°	20
Backward inclination	°	20
Tilt	°	8
Winches		
Main winch	kN	57
Crowd winch	kN	57
Aux winch	kN	25
Crowd system		
Max. pull down force	kN	114
Max. extraction force	kN	171
Depth*	m	9/12
Hole diameter	mm	600
Transport (w/o excavator)		
Length	mm	8600
Width	mm	1800
Height	mm	2000
Weight (w/o tool)	kg	5300-5550
Excavator class	t	30-50
Accessories		
Mechanical auger guide		
Star (auger) cleaner		
Pulley system		

NOTE!

* depending on tooling; additional counter weight might be required depending on excavator brand & model.



Optionally available for CFA - star auger cleaner.



MULTI-TOOL PILING LEADERS, MPL-300 Tooling

TECHNICAL DATA

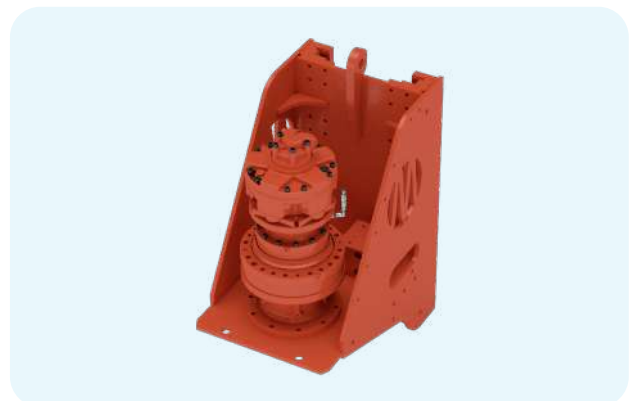
Piling hammer

Model		DH-15	DH-25
Total weight	kg	2800	3700
Ram weight	kg	1360	2060
Blows per minute	1/min	0-100	0-100
Impact energy	kNm	0-15	0-25
Drop height	m	0-1,2	0-1,2
Total height	mm	3850	4460
Frame width	mm	500	500
Transport width	mm	1200	1200
Transport depth	mm	1870	1870
Oil flow	l/min	80-120	80-120
Operating pressure	bar	150	200
Pressure relief set, max	bar	350	350
Suitable piles			
Sheet piles		U and Z, max length 12 m	
H-beams		up to HEB500, max length 12 m	
Tubular steel piles		up to Ø 508 mm, 12 m up to Ø 762 mm, 8 m	
Precast concrete		up to 250x250 mm, max length 12 m	



Rotary drive for pre-augering

Model		PD-50
Total weight	kg	600
Torque, max	kNm	50
Drilling speed	rpm	0-40
Connecting pin, hexagonal	mm	70
Oil flow	l/mm	240
Maximum pressure	bar	350
Pre-augering		
Depth	m	12
Hole diameter	mm	300-600



Vibratory pile drivers

Model		TG-90	TG-120
Total weight (transport)	kg	2400	2460
Total weight (operating)	kg	2325	2385
Dynamic weight	kg	1750	1810
Dynamic weight (excl. clamp)	kg	1170	1230
Height	mm	2500	2500
Depth	mm	1330	1330
Width	mm	460/410*	460/410*
Eccentric moment	kgm	9,6	12,6
Frequency	1/s	2300	2300
Line pull, max	kN	200	200
Amplitude	mm	11,5/16**	14,5/20**
Centrifugal force	kN	544	718
Oil flow	l/min	200	240
Operating pressure, max	bar	350	350
Excavator class	ton	30-45	35-50
Suitable piles			
Sheet piles		U and Z, max length 12 m	
H-beams		up to HEB500, max length 12 m	
Tubular steel piles		up to Ø 508 mm, 12 m	
		up to Ø 762 mm, 8 m	

NOTE!

* total/along piling line

** with/without bottom clamp



Rotary drive for CFA

Model		RHP-5
Total weight	kg	1400
Torque, max	kNm	50
Drilling speed	rpm	0-50
Connecting pin, hexagonal	mm	N/A
Oil flow	l/mm	250
Maximum pressure	bar	320
CFA		
Depth	m	12
Hole diameter	mm	300-600

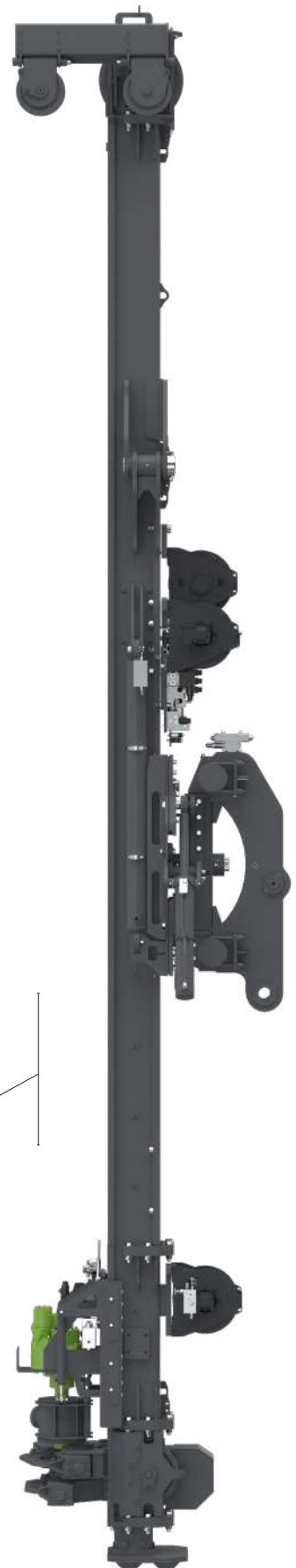
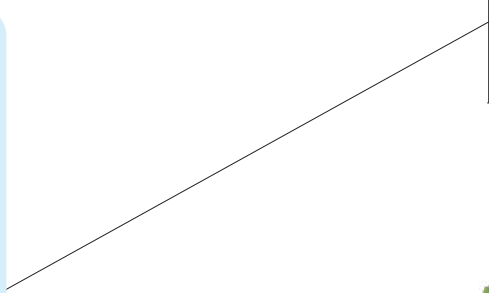
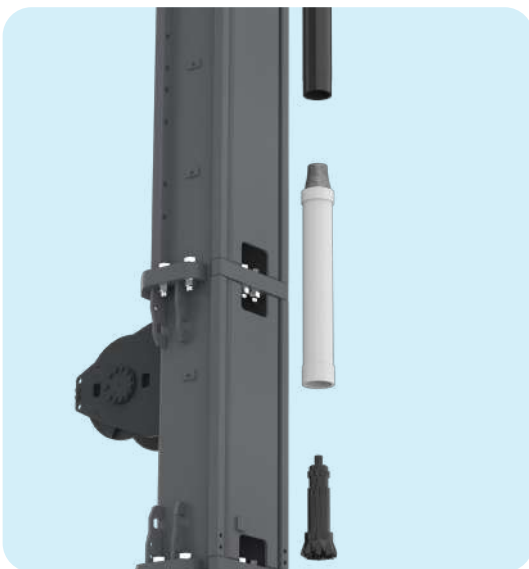


Rotary drives for DTH

Model		GEONEX GR15	GEONEX GR50
Max. casing diameter	mm	323,9	610
Weight	kg	200	650
Length	mm	363	520
Width	mm	400	580
Height	mm	370	615
Thread connection		Api Reg 2 3/8" F, Api Reg 3 1/2" F, Api Reg 4 1/2" F	Api Reg 3 1/2" F, Api Reg 4 1/2" F, Api Reg 6 5/8" F, Hex heads
Max. oil flow	l/min	270	300
Max. oil pressure	bar	250	250
Max. torque, slow gear	kNm	min 7,5 / max 15	min 14 / max 55
Max. torque, fast gear	kNm	min 5 / max 10	min 9,3 / max 37,5
Max. rotation speed, slow gear	rpm	min 60 / max 30	min 57 / max 14
Max. rotation speed, fast gear	rpm	min 90 / max 45	min 85 / max 21

Suitable DTHs (Down-the-Hole-Hammers)

Model		DTH size	DTH size
139,7	mm	4"	4"
168,3	mm	5"	5"
219,1	mm	6"/7"	6"/7"
273	mm	8"	8"
323,9	mm	10"	10"
406,4	mm	NA	12"
508	mm	NA	15"
610	mm	NA	18"





MULTI-TOOL PILING LEADERS, MPL-300

TOOLING & OPTIONS

The MOVAX Multi-tool piling leader MPL-300 is of a modular design and thus suitable for a wide range of applications and piling technologies, including driven piles, pre-augering and CFA. The tooling can be easily and quickly changed and the leader can be modified for any given pile length or pre-augering/CFA depth between 6 and 12 meters to allow for low head room operation.

Tool mounting bracket
for fast and easy change
of tooling.



Piling hammers
MOVAX DH-15 or DH-25
0-15/0-25 kNm
0-100 blows/min
0-1,2 m drop height



Vibratory pile driver
MOVAX TG-90
544 kN | 9,6kgm
2300 1/s | 11,5/16 mm
MOVAX TG-120
718 kN | 12,6 kgm
2300 1/s | 14,5/20 mm



Pre-auger
PD-50
50 kNm
0-40 rpm



CFA Rotary drive
RHP-5
50 kNm
0-50 rpm



The MOVAX MPL-300 is always customised to meet customer-specific requirements. Technical parameters can be tailored and accessories are available for various tooling and applications.



Main winch 57 kN, available with 5,7 or 17,1 ton lifting force (1x or 3x winch line pull).

Available with optional 2,5 ton service winch for lifting piles, augers and reinforcements.

Mounted directly onto excavator, stick or onto main boom (depending on excavator class).
Excavator- and mounting-specific adapter included in the delivery.



Available with tool specific accessories; for example CFA auger star cleaner

Available with pile or auger guide for accurate positioning and verticality.
Pile clamps either mechanical or hydraulic.



Lead augers and augers are available for different soil conditions and with different diameters.

MULTI-TOOL PILING LEADERS

MPL-200

FEATURES

- Excavator stick-, boom- or chassis-mounted Multi-tool piling leader, designed especially for micropiling and solar piling applications. Mounting option depends upon tooling and excavator class
- Tooling alternatives include vibratory pile driver, hydraulic hammer and rotary drives for pre-augering
- Suitable for a wide range of piling applications, including pre-augering and driven piles (sheet piles, tubular steel piles, H-beams and precast concrete piles) Effective pile length six (6) meters (for driven piles per single pile section)
- Multi-tool piling leader and tooling designed to work on a standard excavator with normal auxiliary hydraulics. All leader related hydraulics are integrated onto the leader itself. Tooling can be changed easily and fast and the Multi-tool piling leader can also easily, fast and flexibly be attached and detached enabling other usage of the excavator
- The Multi-tool piling leader and the tooling is controlled with the MOVAX Control System mControl+ Pro

DISCLAIMER

MPL Multi-tool piling leaders are customised solutions. Hence the features and technical data of a specific MPL delivery might differ from the data presented in this catalogue.



Multi-tool piling leaders for DRIVEN PILES



MULTI-TOOL PILING LEADERS, MPL-200

TECHNICAL DATA

Multi-tool piling leader, MPL-200

Model		MPL-200
Weight (excl. adapter & tooling)	kg	1800
Height	m	7,8
Excavator class	t	8-30

Vibratory pile driver

Model		TG-15
Frequency	Hz	50
Eccentric moment	kgm	1,6
Centrifugal force, max	kN	150
Excavator class, min	t	
Chassis mounted*		8
Boom mounted		16
Stick mounted		23
Suitable piles		
Sheet piles	size	U and Z piles / 6 m
H-beams	size	up to H200 / 6 m
Tubular steel piles	size	up to Ø 220 mm / 6 m



Rotary drive for pre-augering

Model		PD-6
Rotation speed	rpm	20-43
Torque		12
Excavator class	t	
Chassis mounted*		8
Boom mounted		16
Stick mounted		23



Hydraulic hammers

Model		IH-1200	IH-2500	IH-3400
Blows per minute	1/min	570-1180	460-940	400-870
Energy	Nm	1200	2500	3400
Excavator class, min	t			
- Chassis mounted		8	16	18
- Boom mounted		16	20	20
- Stick mounted		23	26	30
Suitable piles				
Sheet piles	size	U and Z piles / 6 m		
H-beams	size	up to H200 / 6 m		
Tubular steel piles	size	up to Ø 220 mm / 6 m		

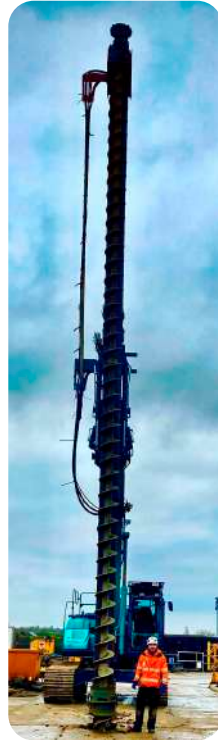


NOTE! excavator class is limited by hydraulic power rather than excavator lifting capacity

DRIVEN, DRILLED & BORED PILES

MULTI-TOOL PILING LEADERS

PRE-AUGERING



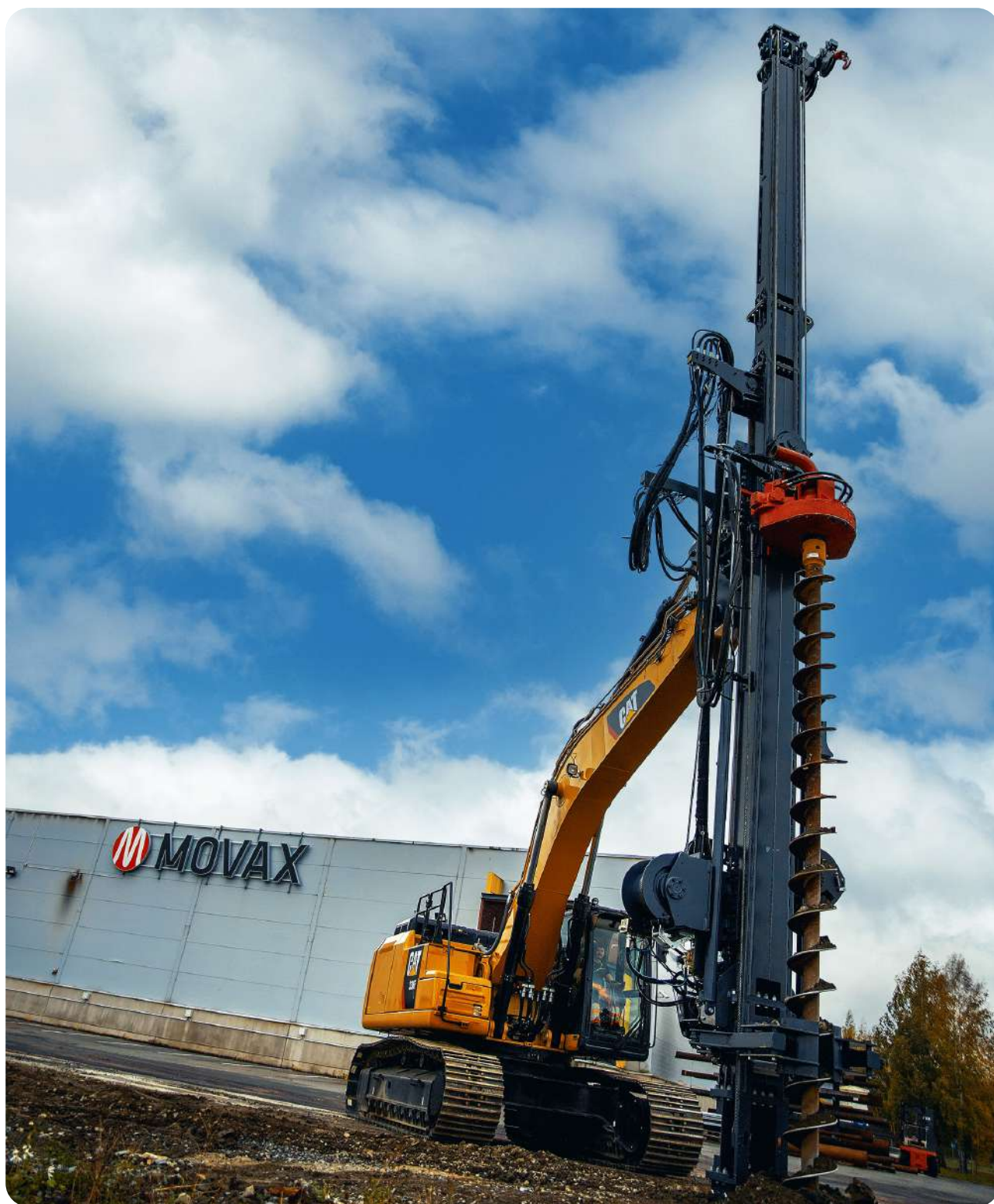


DRIVEN, DRILLED & BORED PILES

MULTI-TOOL PILING LEADERS

CFA



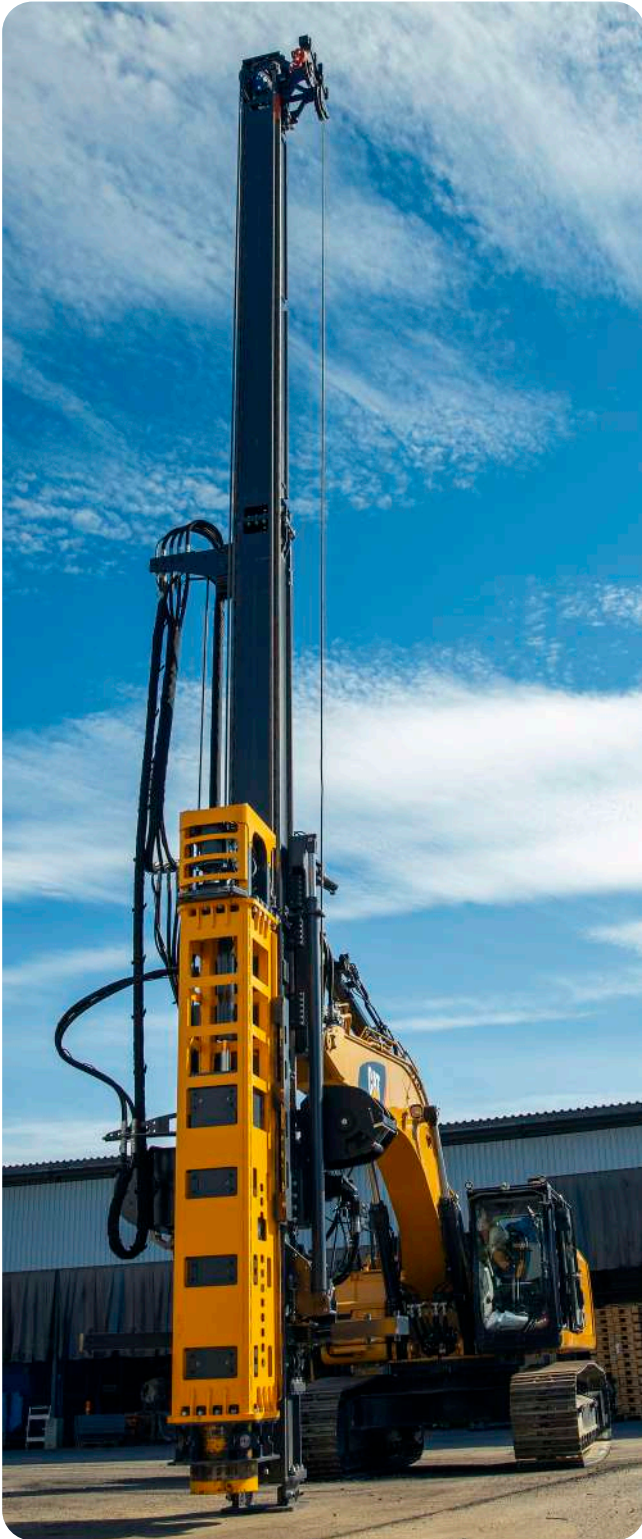


DRIVEN, DRILLED & BORED PILES

MULTI-TOOL PILING LEADERS

IMPACT DRIVING





DRIVEN, DRILLED & BORED PILES

MULTI-TOOL PILING LEADERS

VIBRATORY DRIVING





DRIVEN, DRILLED & BORED PILES

MULTI-TOOL PILING LEADERS

DTH





CFA PILE REPORT

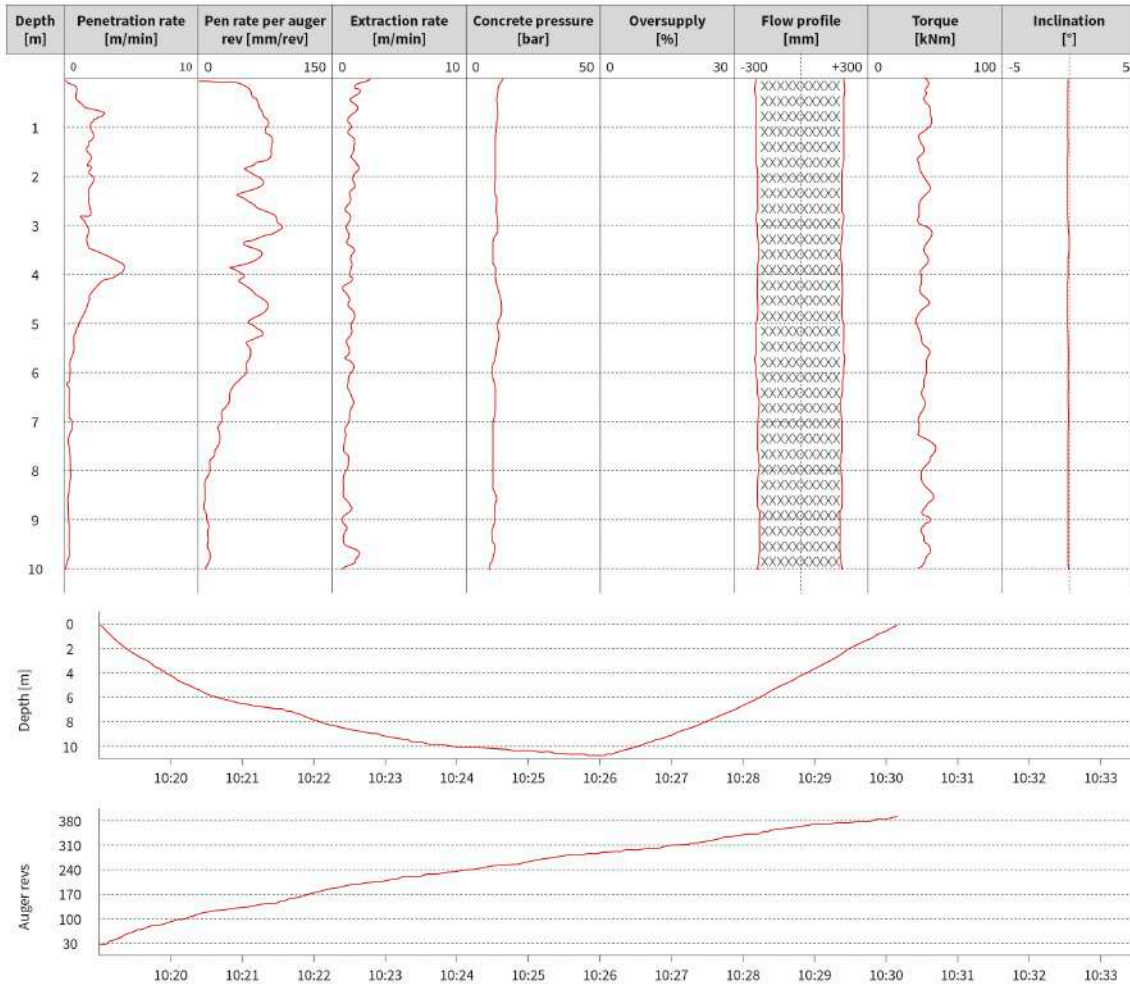
Based on the project report it is possible to generate pile specific reports for each individual pile; and for each individual MOVAX piling equipment.

mLOGBOOK

PILE REPORT CFA

Pile# 12

Main project	Bridge construction	Operator	Tom Jackson	MOVAX piling equipment	MPL-400/CFA, sn 1255
Sub project	SE Exit	Date	2020-05-12		
Location	Islington, London	Start time	12:50:00	Pile type	CFA
Customer	Road constructors ltd	End time	12:53:10	Auger rev's	384
Contract number	923000-A1	Elapsed time	03:10	Pile dimensions/depth	dia 400 mm / 10 m
Note!				Concrete volume	6 m ³
				Oversupply	25%



The individual, pile specific reports for MOVAX MPL CFA include the following information:
 Position data, Pile type, Pile dimensions, Pile depth, Angle, Torque, Concrete volume,
 Concrete pressure, Start time, End time, Elapsed time, Date

CFA PROJECT REPORT

The mLogbook 'project report' includes all the information related to the piling or foundation project including pile type & dimensions, the depth to which the pile has been driven with the various tools and for instance in the case of load bearing piles also information related to the pile set.

Different parameters are reported for the different MOVAX piling equipment.

mLOGBOOK

PROJECT REPORT

Main project	Bridge construction	MOVAX piling equipment	MPL-400/CFA, sn 1255	Operator	Tom Jackson
Sub project	SE Exit			Start date	2020-05-12
Location	Islington, London	Pile type	CFA	End date	2020-05-31
Customer	Road constructors Ltd	Note!			
Contract number	923000-A1				

Pile#	Position data	Pile type	Pile dimensions [mm]	Pile depth [m]	Angle [°]	Torque (average) [kNm]	Concrete volume [m³]	Concrete pressure (average) [bar]	Start time	End time	Elapsed time	Date
1	53°26'54.036"N 2°12'47.012"W	CFA	400	10	0,1	41,1	5,39	68	12:04:40	12:45:34	0:40:54	2020-05-12
2	53°26'54.037"N 2°12'47.012"W	CFA	400	10	-0,3	36,2	5,55	37	8:42:24	8:55:55	0:13:31	2020-05-13
3	53°26'54.038"N 2°12'47.012"W	CFA	400	10	-0,4	36,4	5,33	21	9:44:22	9:59:20	0:14:58	2020-05-13
4	53°26'54.039"N 2°12'47.012"W	CFA	400	10	0,1	35,5	5,72	48	10:55:33	11:34:22	0:38:49	2020-05-13
5	53°26'54.040"N 2°12'47.012"W	CFA	400	10	-0,1	38,9	5,11	24	12:04:40	12:45:34	0:40:54	2020-05-13
6	53°26'54.041"N 2°12'47.012"W	CFA	400	10	0,2	39,7	5,64	28	13:07:22	13:30:22	0:23:00	2020-05-13
7	53°26'54.038"N 2°12'47.012"W	CFA	400	10	0,4	36,8	5,21	79	13:45:55	13:59:22	0:13:27	2020-05-13
8	53°26'54.041"N 2°12'47.012"W	CFA	400	10	-0,2	36,3	5,03	27	14:15:00	14:26:22	0:11:22	2020-05-13
9	53°26'54.038"N 2°12'47.012"W	CFA	400	10	0,0	39,9	5,20	73	14:47:44	15:13:20	0:25:36	2020-05-13
10	53°26'54.041"N 2°12'47.012"W	CFA	400	10	0,0	37,6	5,79	64	14:15:00	14:26:22	0:11:22	2020-05-14
11	53°26'54.038"N 2°12'47.012"W	CFA	400	10	-0,3	36,5	5,87	33	13:07:22	13:30:22	0:23:00	2020-05-15
12	53°26'54.041"N 2°12'47.012"W	CFA	400	10	0,1	37,4	5,73	60	12:04:40	12:45:34	0:40:54	2020-05-16
13	53°26'54.038"N 2°12'47.012"W	CFA	400	10	-0,3	39,3	5,24	59	8:42:24	8:55:55	0:13:31	2020-05-17
14	53°26'54.041"N 2°12'47.012"W	CFA	400	10	-0,1	41,0	5,91	76	9:44:22	9:59:20	0:14:58	2020-05-18
15	53°26'54.038"N 2°12'47.012"W	CFA	400	10	-0,3	41,6	5,44	58	10:55:33	11:34:22	0:38:49	2020-05-18
16	53°26'54.041"N 2°12'47.012"W	CFA	400	10	-0,1	40,1	5,44	78	12:04:40	12:45:34	0:40:54	2020-05-25
17	53°26'54.038"N 2°12'47.012"W	CFA	400	10	-0,1	38,2	5,67	75	8:42:24	8:55:55	0:13:31	2020-05-26
18	53°26'54.041"N 2°12'47.012"W	CFA	400	10	0,1	37,4	5,41	30	9:44:22	9:59:20	0:14:58	2020-05-26
19	53°26'54.038"N 2°12'47.012"W	CFA	400	10	-0,1	37,6	5,07	35	10:55:33	11:34:22	0:38:49	2020-05-26
20	53°26'54.041"N 2°12'47.012"W	CFA	400	10	0,0	37,7	5,86	42	12:04:40	12:45:34	0:40:54	2020-05-26

The individual, pile specific reports for the MOVAX MPL CFA include the following information:

Position data, Pile type, Pile dimensions, Pile depth, Angle, Torque, Concrete volume, Concrete pressure, Start time, End time, Elapsed time, Date



HIGHER PRODUCTIVITY - SIGNIFICANT SAVINGS
fast. efficient. versatile. accurate. safe. reliable.

Movax Oy

Tölkkimäentie 10
FI-13130 Hämeenlinna, Finland

Tel. +358 3 628 070
Fax +358 3 616 1641

marketing@movax.fi | movax.com

*Please refer to www.movax.com
for worldwide, certified partners.*

