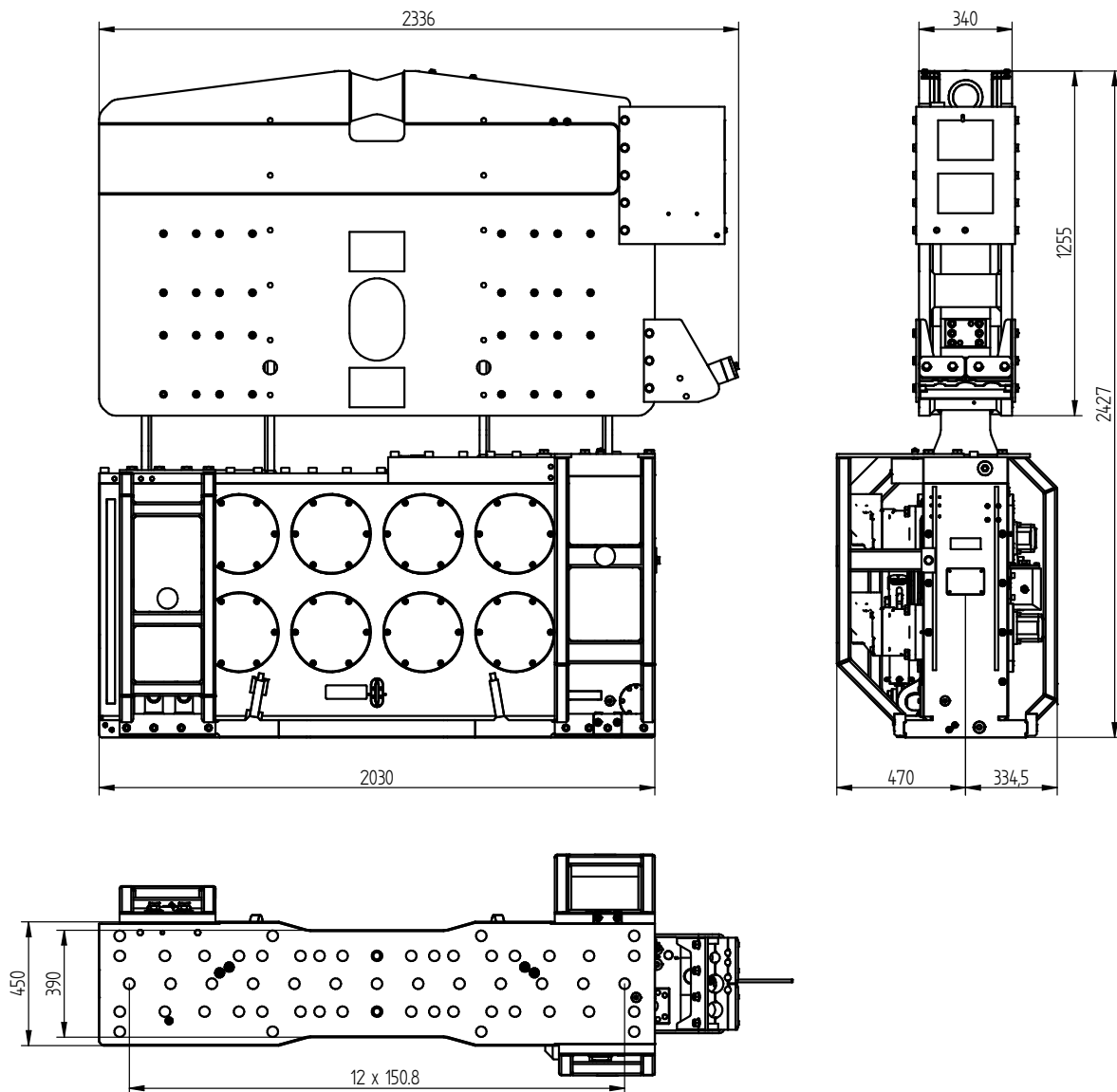


Specifications :

ICE 28RF

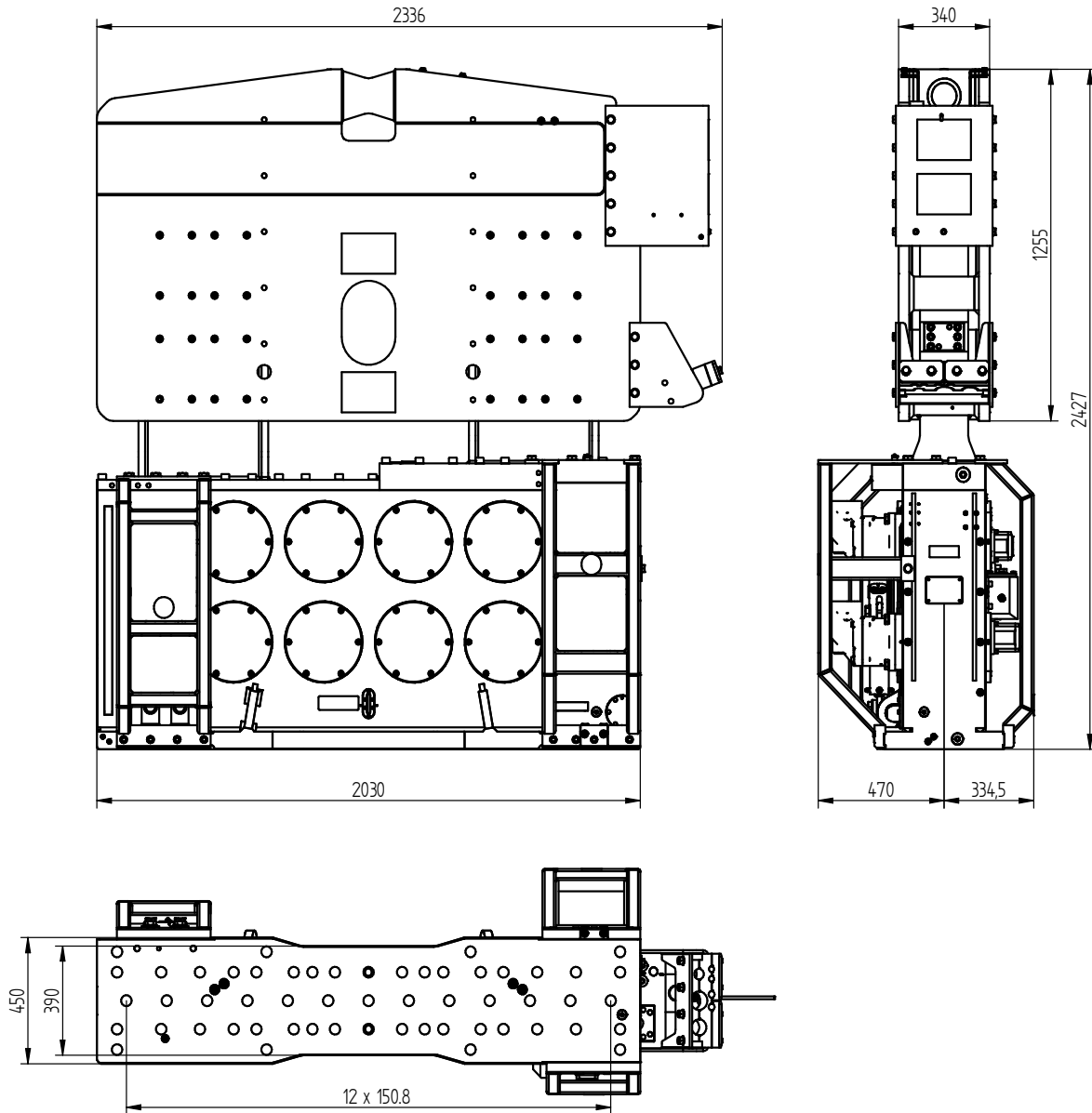
Eccentric moment	0-28 kgm	Clamps:	
Max. centrifugal force	0-1600 kN	Sheet pile clamp	200TU
Max. frequency	2300 rpm	Transport weight per piece	1300 kg
Max. amplitude excl. 200TU	14 mm	Double clamps	100TC
Max. amplitude incl. 200TU	10,8 mm	Transport weight per piece	690 kg
Max. static line-pull	400 kN		
Max. pull-down	150 kN		
Max. operating pressure	350 bar	Powerpack:	
Max. oil flow	590 l/min	Model	600 series
Max. hydraulic power	344/468 kW/HP		
Forced lubrication	yes		
Dynamic weight excl. 200TU	3500 kg	Hose set:	
Dynamic weight incl. 200TU	5200 kg	Length	45 m
Total weight excl. 200TU & hoses	5900 kg	Transport weight (±)	1121 kg



Technische Daten :

ICE 28RF

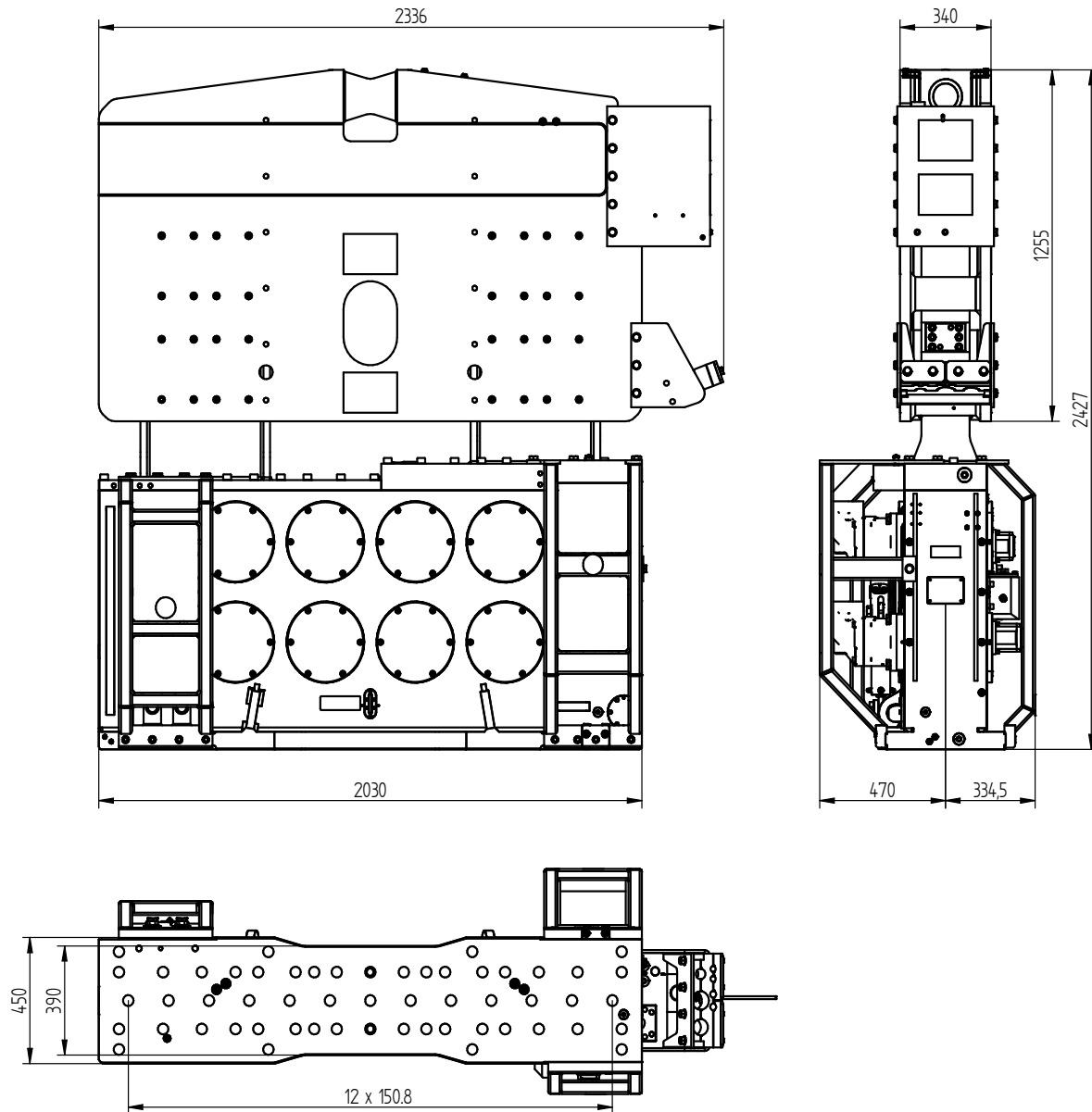
Statisches Moment	0-28 kgm	Klemmzange:	
Max. Fliehkraft	0-1600 kN	Universalzange	200TU
Max. Drehzahl	2300 rpm	Transportgew. pro Stück	1300 kg
Max. Amplitude ohne 200TU	14 mm	Rohrklemmzange	100TC
Max. Amplitude mit 200TU	10,8 mm	Transportgew. pro Stück	690 kg
Max. Statische Zugkraft	400 kN		
Max. Vorspannung	150 kN		
Max. Betriebsdruck	350 bar	Aggregat:	
Max. Fördermenge	590 l/min	Modell	600 series
Max. hydraulische Leistung	344/468 kW/PS		
Zwangsschmierung	ja		
Dyn. Gewicht ohne 200TU	3500 kg	Schlauchsatz:	
Dyn. Gewicht mit 200TU	5200 kg	Länge	45 m
Gesamtgew. ohne 200TU & Schläuche	5900 kg	Transportgewicht (±)	1121 kg



Spécifications

ICE 28RF

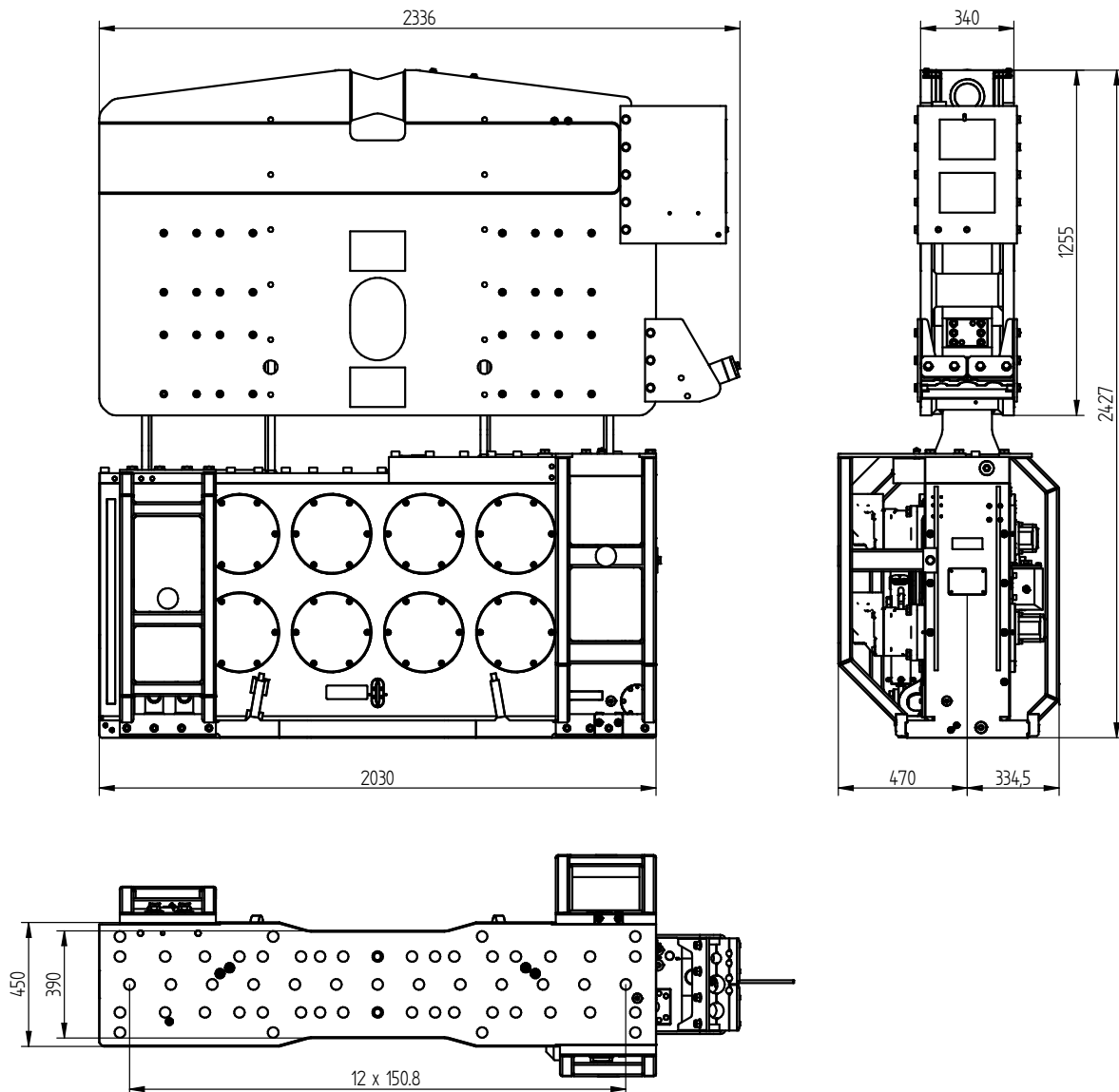
Moment excentrique	0-28 kgm	Pincés:	
Max. force centrifuge	0-1600 kN	Pince palplanche	200TU
Max. fréquence	2300 rpm	Poids de transport par pièce	1300 kg
Max. amplitude sans 200TU	14 mm	Pince tube	100TC
Max. amplitude avec 200TU	10,8 mm	Poids de transport par pièce	690 kg
Force de traction statique	400 kN		
Force maximale d'appui	150 kN		
Pression de travail max.	350 bar	Groupe hydraulique:	
Débit d'huile max.	590 l/min	Modèle	600 series
Puissance hydraulique max.	344/468 kW/ch		
Huile lubrifiante	oui		
Poids dynamique sans 200TU	3500 kg	Jeu de tuyau:	
Poids dynamique avec 200TU	5200 kg	Longueur	45 m
Poids total sans 200TU & tuyaux	5900 kg	Poids de transport (±)	1121 kg



Specificaties

ICE 28RF

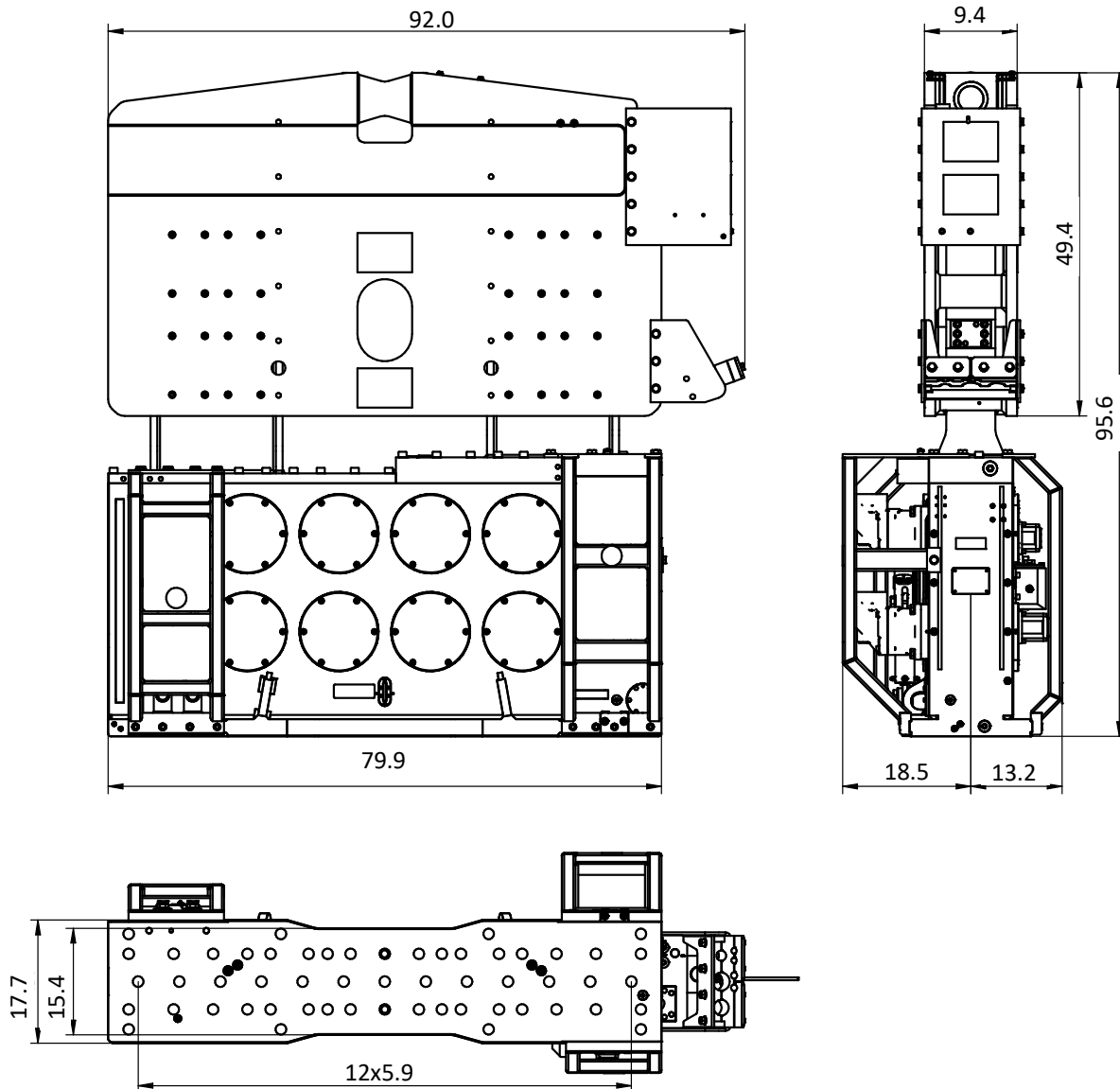
Excentrisch moment	0-28 kgm	Klemmen:	
Max. centrifugaalkracht	0-1600 kN	Damwandklem	200TU
Max. toerental	2300 rpm	Transportgewicht per klem	1300 kg
Max. amplitude excl. 200TU	14 mm	Pijpenklem	100TC
Max. amplitude incl. 200TU	10,8 mm	Transportgewicht per klem	690 kg
Max. statische trekkracht	400 kN		
Max. voorspanning	150 kN		
Max. werkdruk	350 bar	Aggregaat:	
Max. oliedoorstroming	590 l/min	Model	600 series
Max. hydraulisch vermogen	344/468 kW/PK		
Geforceerde smering	ja		
Dynamisch gewicht excl. 200TU	3500 kg	Slangenset:	
Dynamisch gewicht incl. 200TU	5200 kg	Lengte	45 m
Totaalgewicht excl. 200TU & slangen	5900 kg	Transportgewicht (±)	1121 kg



Especificaciones		ICE 28RF	
Momento excéntrico	0-28 kgm	Abrazadera:	
Fuerza centrífuga máxima	0-1600 kN	Hoja abrazadera pila	200TU
Frecuencia máxima	2300 rpm	Peso de transporte por pieza	1300 kg
Amplitud máxima excluyendo 200TU	14 mm	Abrazadera de tubo	100TC
Amplitud máxima incluyendo 200TU	10,8 mm	Peso de transporte por pieza	690 kg
Estático tracción máxima	400 kN		
Compresión máxima	150 kN		
Presión máxima de trabajo	350 bar	Unidad de potencia:	
Flujo de aceite máximo	590 l/min	Modelo	600 series
Máxima potencia hidráulica	344/468 kW/HP		
Lubricación forzada	si		
Peso dinámico excluyendo 200TU	3500 kg	Conjunto de manguera:	
Peso dinámico incluyendo 200TU	5200 kg	Longitud	45 m
Peso total excluyendo 200TU & mangueras	5900 kg	Peso de transporte (±)	1121 kg

Dimensions in inches

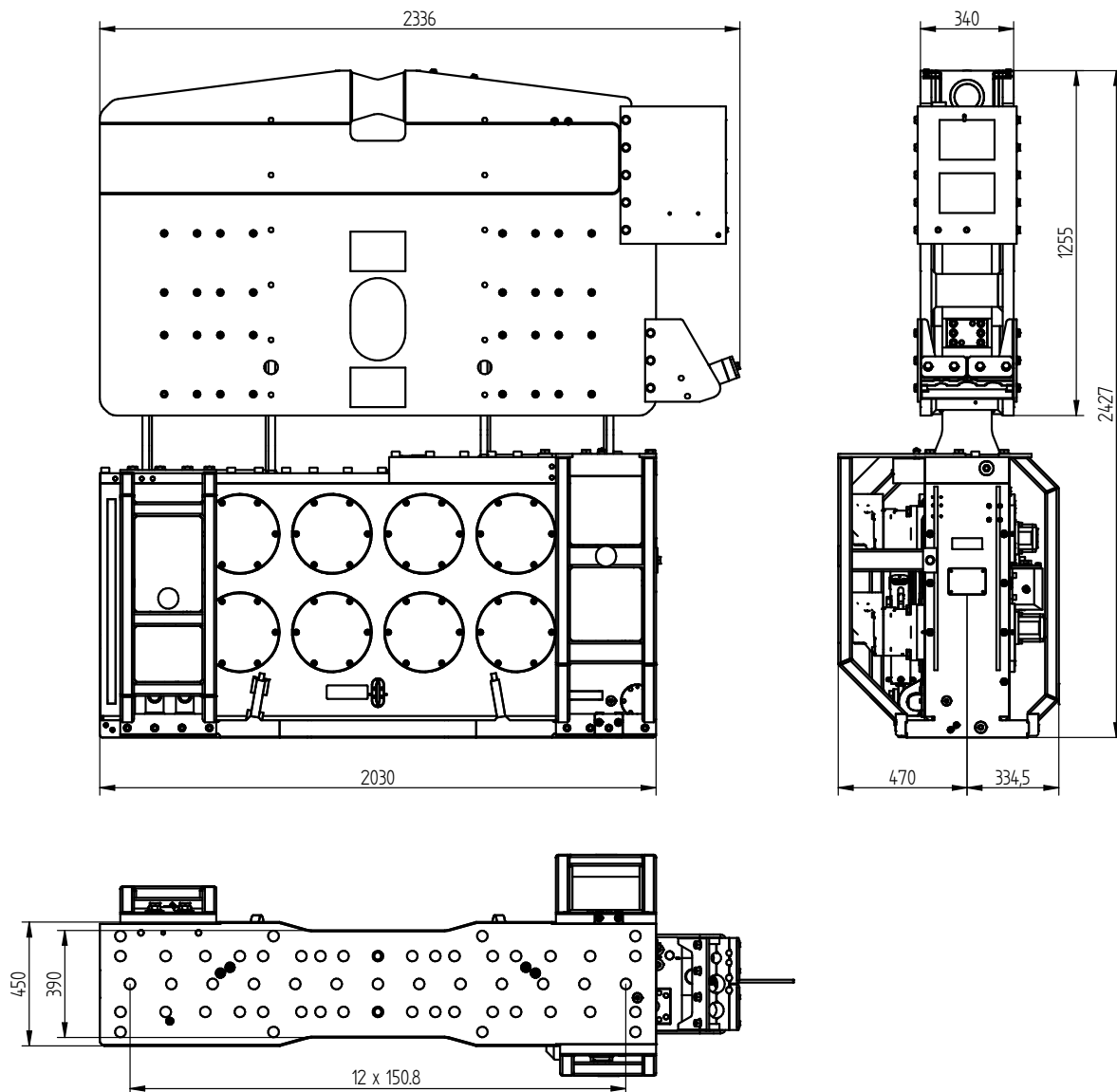
USA



Specifications

ICE 28RF

Eccentric moment	0-2,431 in-lbs	Clamps:	
Max. centrifugal force	0-180 ton	Sheet pile clamp	200TU
Max. frequency	2,300 rpm	Transport weight per piece	2,866 lbs
Max. amplitude excluding 200TU	0.55 in	Double clamps	100TC
Max. amplitude including 200TU	0.43 in	Transport weight per piece	1,521 lbs
Max. static line-pull	41 ton		
Max. pull-down	15 ton		
Max. operating pressure	5,076 psi	Powerpack:	
Max. oil flow	156 gal/min	Model	600 series
Max. hydraulic power	344/468 kW/HP		
Forced lubrication	yes		
Dynamic weight excluding 200TU	7,716 lbs	Hose set:	
Dynamic weight including 200TU	11,464 lbs	Length	148 ft
Total weight excluding 200TU & hoses	13,007 lbs	Transport weight (±)	2,471 lbs



Specificatii :

ICE 28RF

Moment excentric	0-28 kgm	menghira:	
Forta centrifuga maxima	0-1600 kN	menghina pentru palpanse	200TU
Frecventa maxima	2300 rpm	Greutatea de transport pp.	1300 kg
Amplitudine maxima exclusiva. 200TU	14 mm	menghina dubla	100TC
Amplitudine maxima inclusivă. 200TU	10,8 mm	Greutatea de transport pp.	690 kg
Tractiune maxima statica	400 kN		
Trage în jos maxima	150 kN		
Presiune maxima de lucru	350 bar	generatoare:	
Debit maxim de ulei	590 l/min	Model	600 series
Puterea hidraulică maxima	344/468 kW/HP		
Lubrifiere fortata	da		
Greutatea dinamica exclusiva. 200TU	3500 kg	Tip de furtun:	
Greutatea dinamica inclusivă. 200TU	5200 kg	Lungimea	45 m
Greutatea totala fara. 200TU si furtun	5900 kg	Greutatea de transport (±)	1121 kg