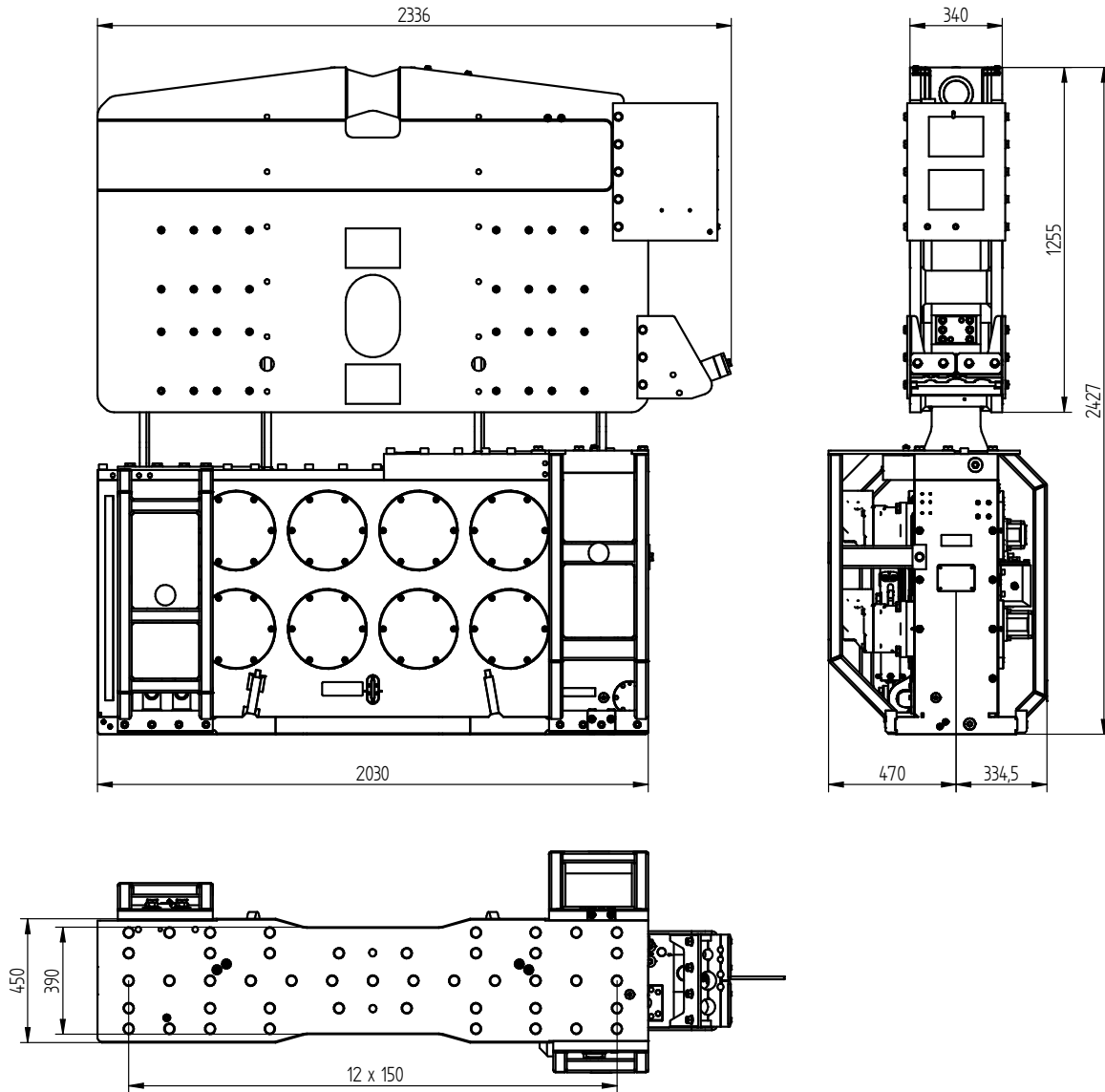




Specification sheet

PVE 28VM

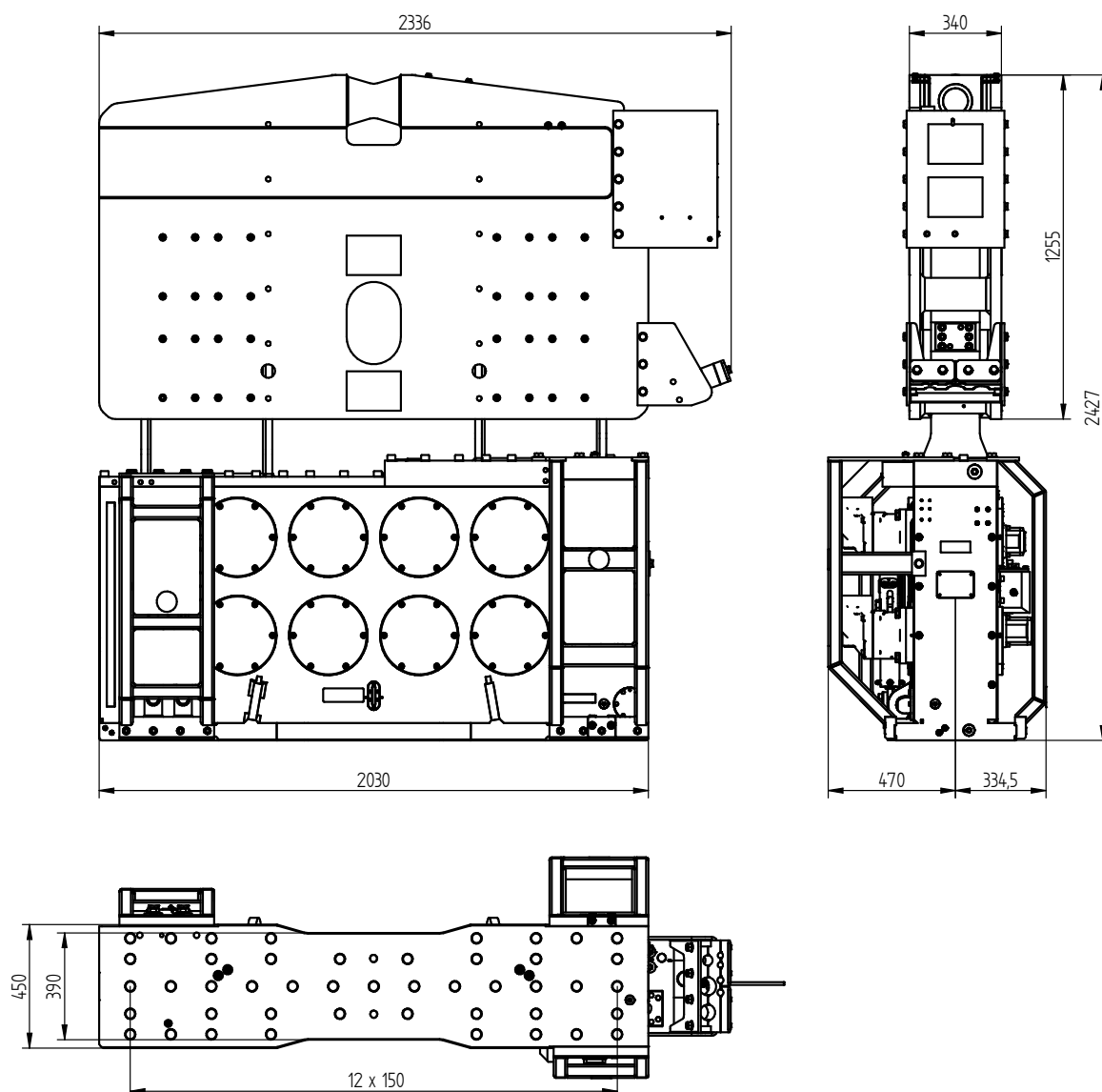
Vibro Hammer



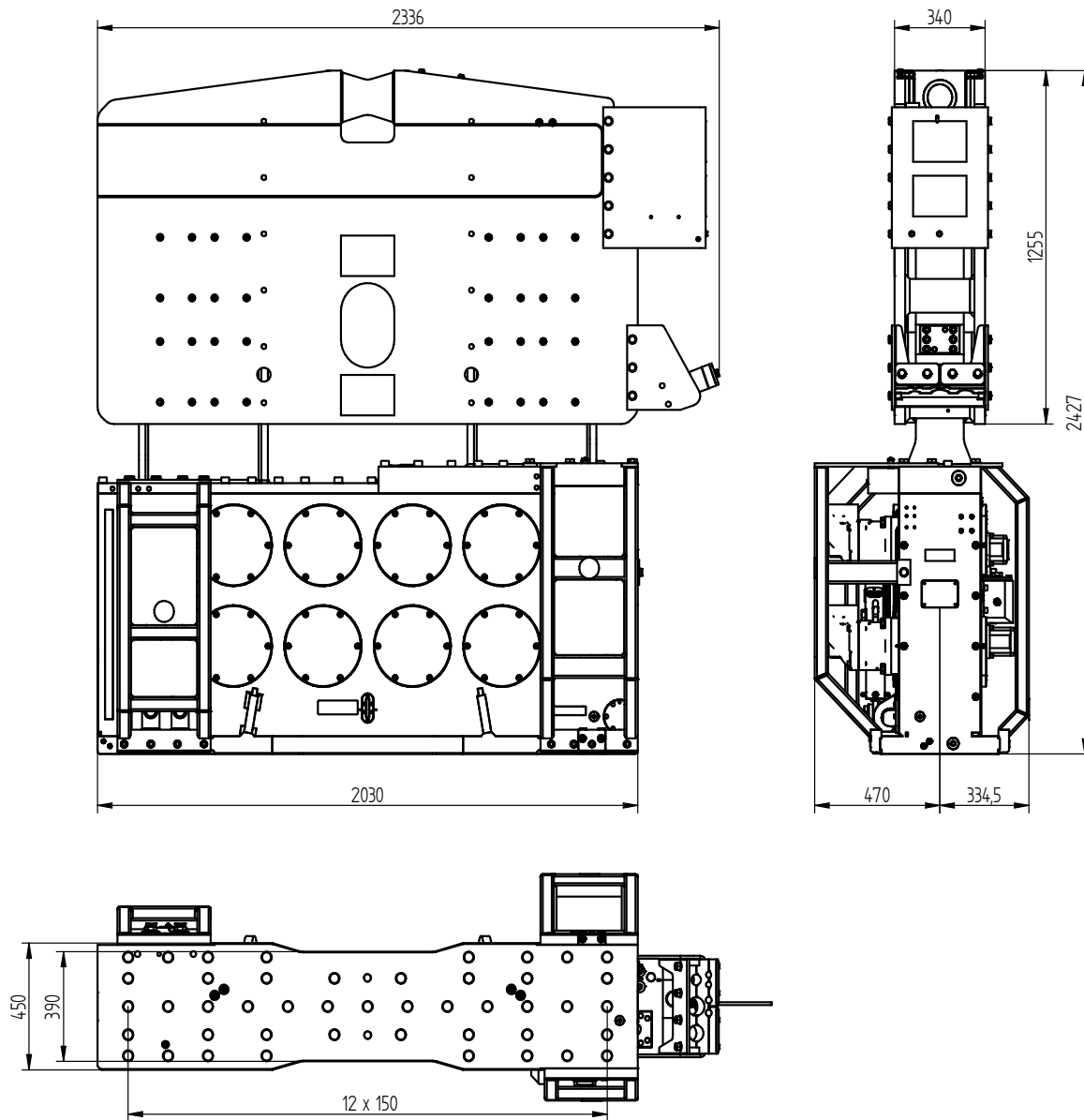
Specifications :

PVE 28VM

Eccentric moment	0-28 kgm	Clamps:	
Max. centrifugal force	0-1600 kN	Sheet pile clamp	200TU-P
Max. frequency	2300 rpm	Transport weight per piece	2000 kg
Max. amplitude excl. 200TU-P	14 mm	Double clamps	100TC
Max. amplitude incl. 200TU-P	10,8 mm	Transport weight per piece	690 kg
Max. static line-pull	400 kN		
Max. pull-down	150 kN		
Max. operating pressure	350 bar	Powerpack:	
Max. oil flow	590 l/min	Model	600 series
Max. hydraulic power	344/468 kW/HP		
Forced lubrication	yes		
Dynamic weight excl. 200TU-P	3500 kg	Hose set:	
Dynamic weight incl. 200TU-P	5500 kg	Length	45 m
Total weight excl. 200TU-P & hoses	5900 kg	Transport weight (±)	1121 kg



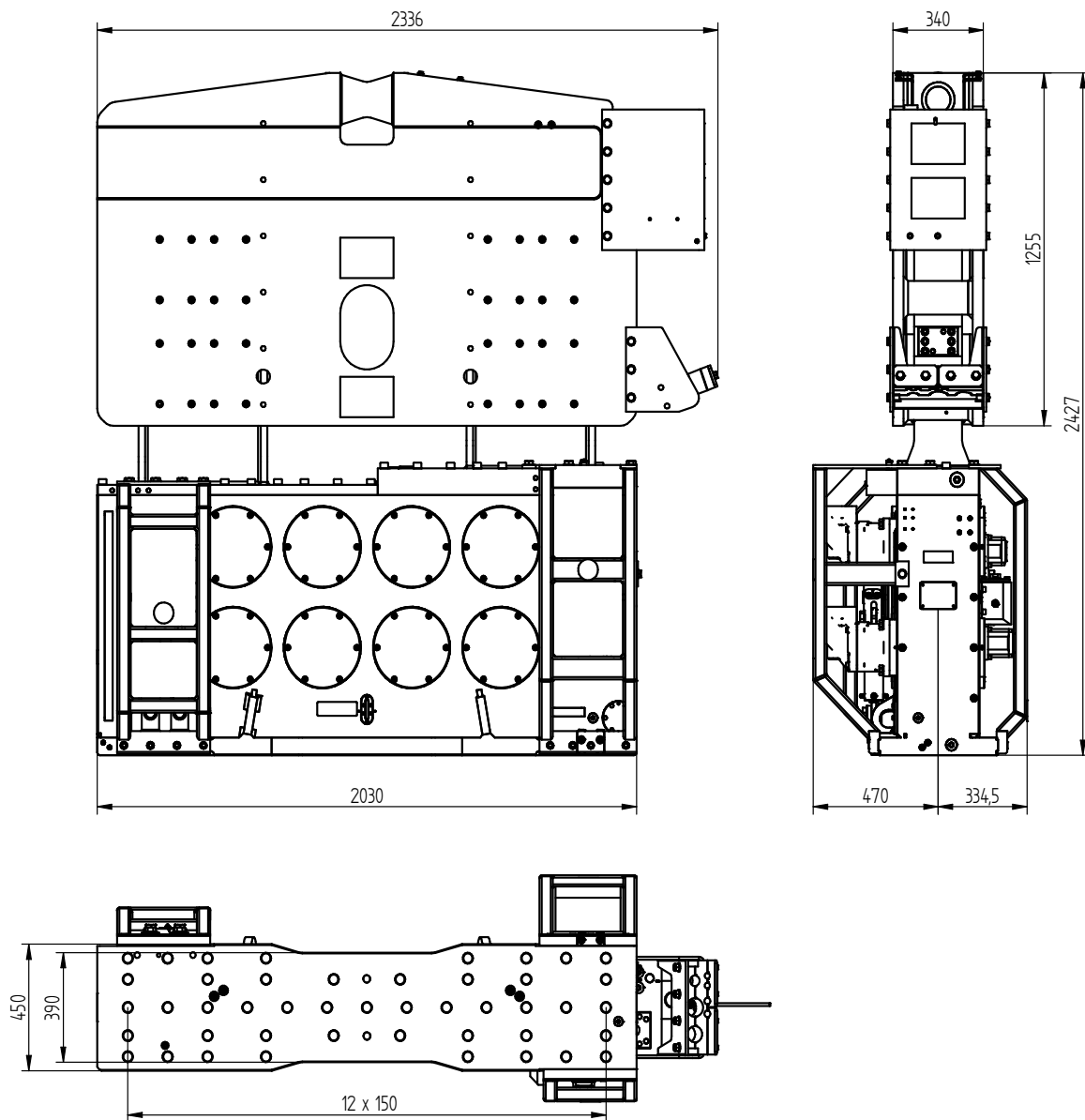
Technische Daten :		PVE 28VM	
Statisches Moment	0-28 kgm	Klemmzange:	
Max. Fliehkraft	0-1600 kN	Universalzange	200TU-P
Max. Drehzahl	2300 rpm	Transportgew. pro Stück	2000 kg
Max. Amplitude ohne 200TU-P	14 mm	Rohrklemmzange	100TC
Max. Amplitude mit 200TU-P	10,8 mm	Transportgew. pro Stück	690 kg
Max. Statische Zugkraft	400 kN		
Max. Vorspannung	150 kN		
Max. Betriebsdruck	350 bar	Aggregat:	
Max. Fördermenge	590 l/min	Modell	600 series
Max. hydraulische Leistung	344/468 kW/PS		
Zwangsschmierung	ja		
Dyn. Gewicht ohne 200TU-P	3500 kg	Schlauchsatz:	
Dyn. Gewicht mit 200TU-P	5500 kg	Länge	45 m
Gesamtgew. Ohne 200TU-P & Schläuche	5900 kg	Transportgewicht (±)	1121 kg



Spécifications

PVE 28VM

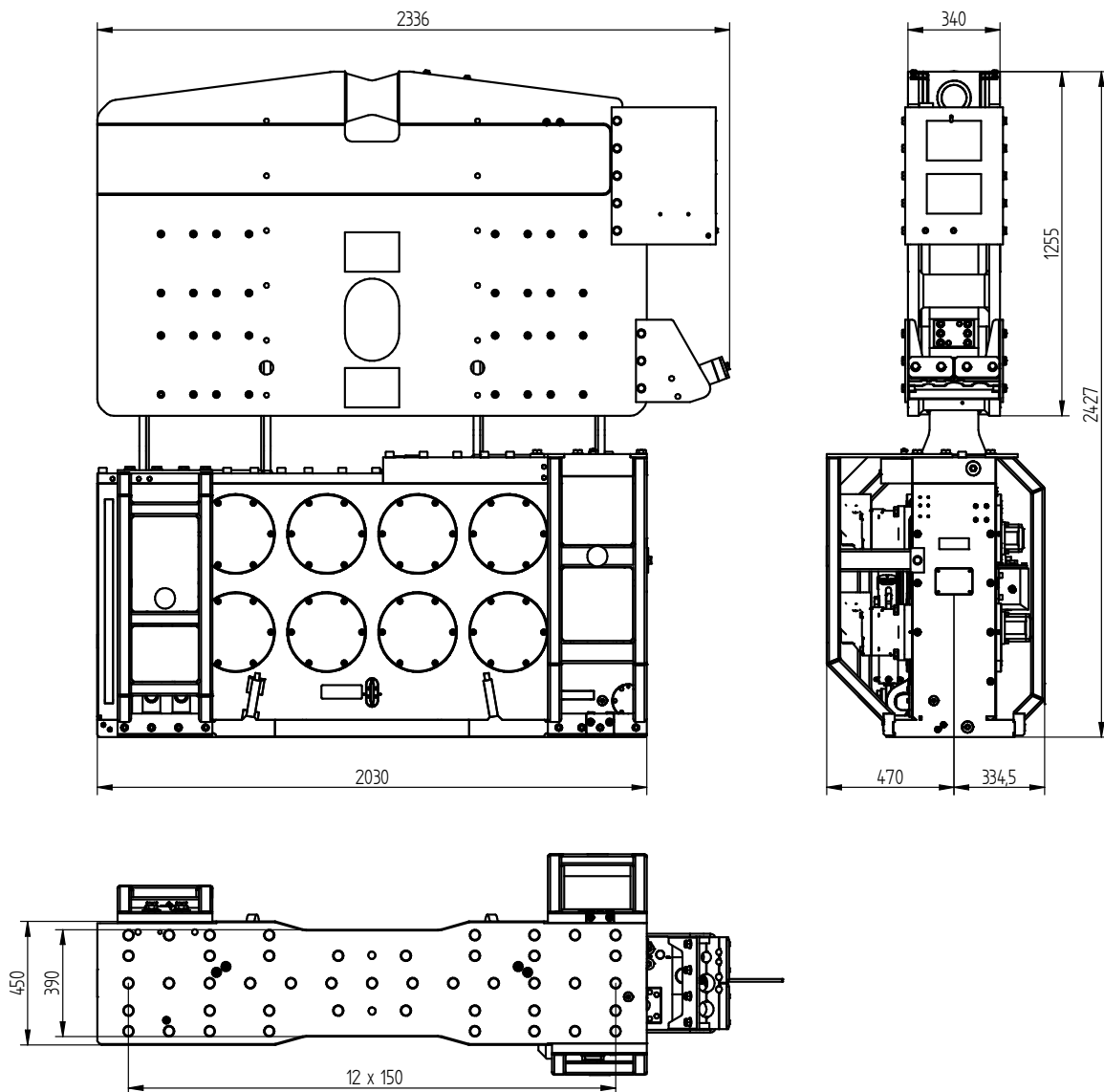
Moment excentrique	0-28 kgm	Pinces:	
Max. force centrifuge	0-1600 kN	Pince palplanche	200TU-P
Max. fréquence	2300 rpm	Poids de transport par pièce	2000 kg
Max. amplitude sans 200TU-P	14 mm	Pince tube	100TC
Max. amplitude avec 200TU-P	10,8 mm	Poids de transport par pièce	690 kg
Force de traction statique	400 kN		
Force maximale d'appui	150 kN		
Pression de travail max.	350 bar	Groupe hydraulique:	
Débit d'huile max.	590 l/min	Modèle	600 series
Puissance hydraulique max.	344/468 kW/ch		
Huile lubrifiante	oui		
Poids dynamique sans 200TU-P	3500 kg	Jeu de tuyau:	
Poids dynamique avec 200TU-P	5500 kg	Longueur	45 m
Poids total sans 200TU & tuyaux	5900 kg	Poids de transport (±)	1121 kg



Specificaties

PVE 28VM

Excentrisch moment	0-28 kgm	Klemmen:	
Max. centrifugaalkracht	0-1600 kN	Damwandklem	200TU-P
Max. toerental	2300 rpm	Transportgewicht per klem	2000 kg
Max. amplitude excl. 200TU-P	14 mm	Pijpenklem	100TC
Max. amplitude incl. 200TU-P	10,8 mm	Transportgewicht per klem	690 kg
Max. statische trekkracht	400 kN		
Max. voorspanning	150 kN		
Max. werkdruk	350 bar	Aggregaat:	
Max. oliedoorstroming	590 l/min	Model	600 series
Max. hydraulisch vermogen	344/468 kW/PK		
Geforceerde smering	ja		
Dynamisch gewicht excl. 200TU-P	3500 kg	Slangenset:	
Dynamisch gewicht incl. 200TU-P	5500 kg	Lengte	45 m
Totaalgewicht excl. 200TU-P & slangen	5900 kg	Transportgewicht (±)	1121 kg



Especificaciones		PVE 28VM	
Momento excéntrico	0-28 kgm	Abrazadera:	
Fuerza centrífuga máxima	0-1600 kN	Hoja abrazadera pila	200TU-P
Frecuencia máxima	2300 rpm	Peso de transporte por pieza	2000 kg
Amplitud máxima excluyendo 200TU-P	14 mm	Abrazadera de tubo	100TC
Amplitud máxima incluyendo 200TU-P	10,8 mm	Peso de transporte por pieza	690 kg
Estático tracción máxima	400 kN		
Compresión máxima	150 kN		
Presión máxima de trabajo	350 bar	Unidad de potencia:	
Flujo de aceite máximo	590 l/min	Modelo	600 series
Máxima potencia hidráulica	344/468 kW/HP		
Lubricación forzada	si		
Peso dinámico excluyendo 200TU-P	3500 kg	Conjunto de manguera:	
Peso dinámico incluyendo 200TU-P	5500 kg	Longitud	45 m
Peso total excluyendo 200TU-P & mangueras	5900 kg	Peso de transporte (±)	1121 kg



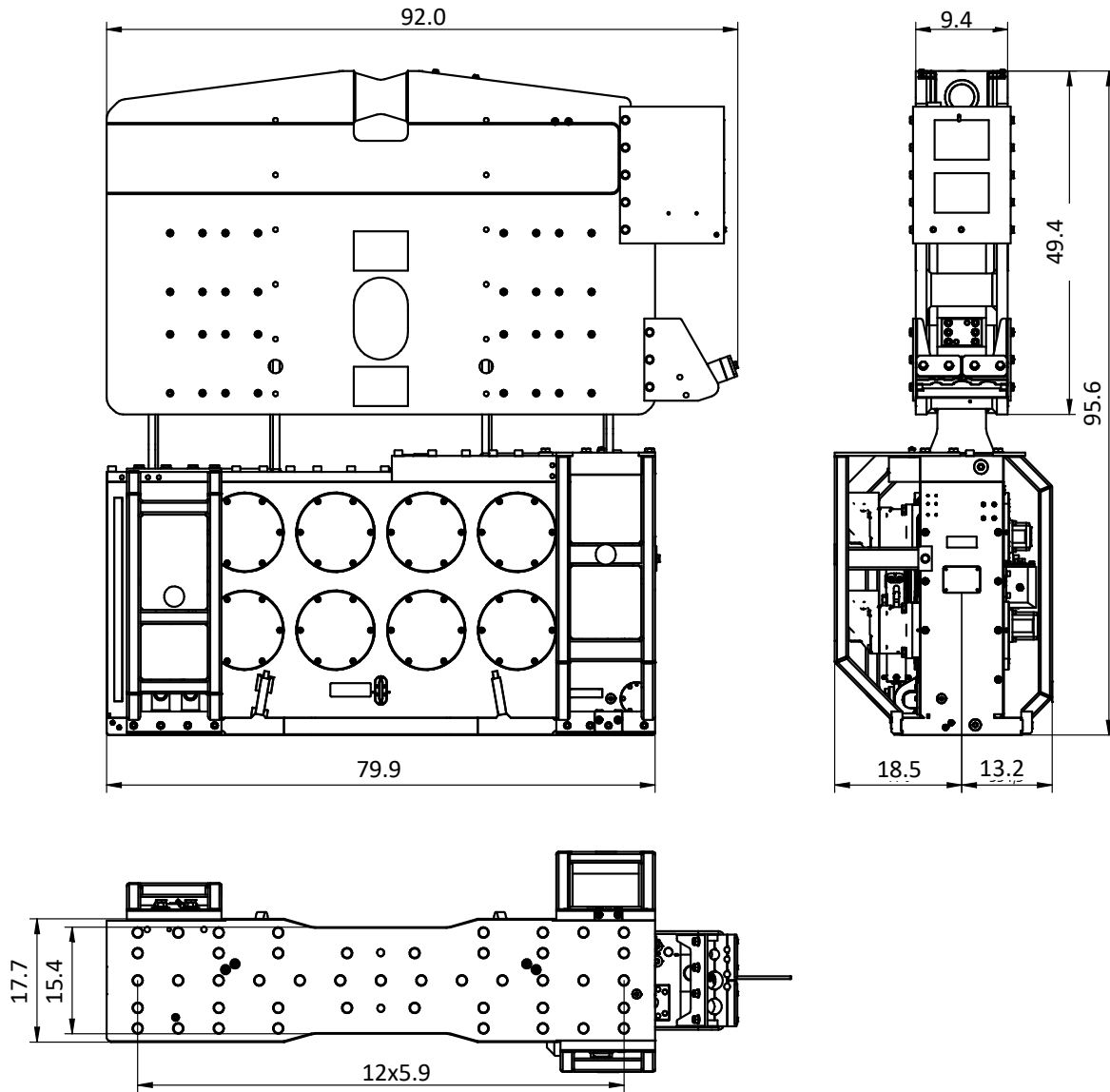
Specifications

PVE 28VM

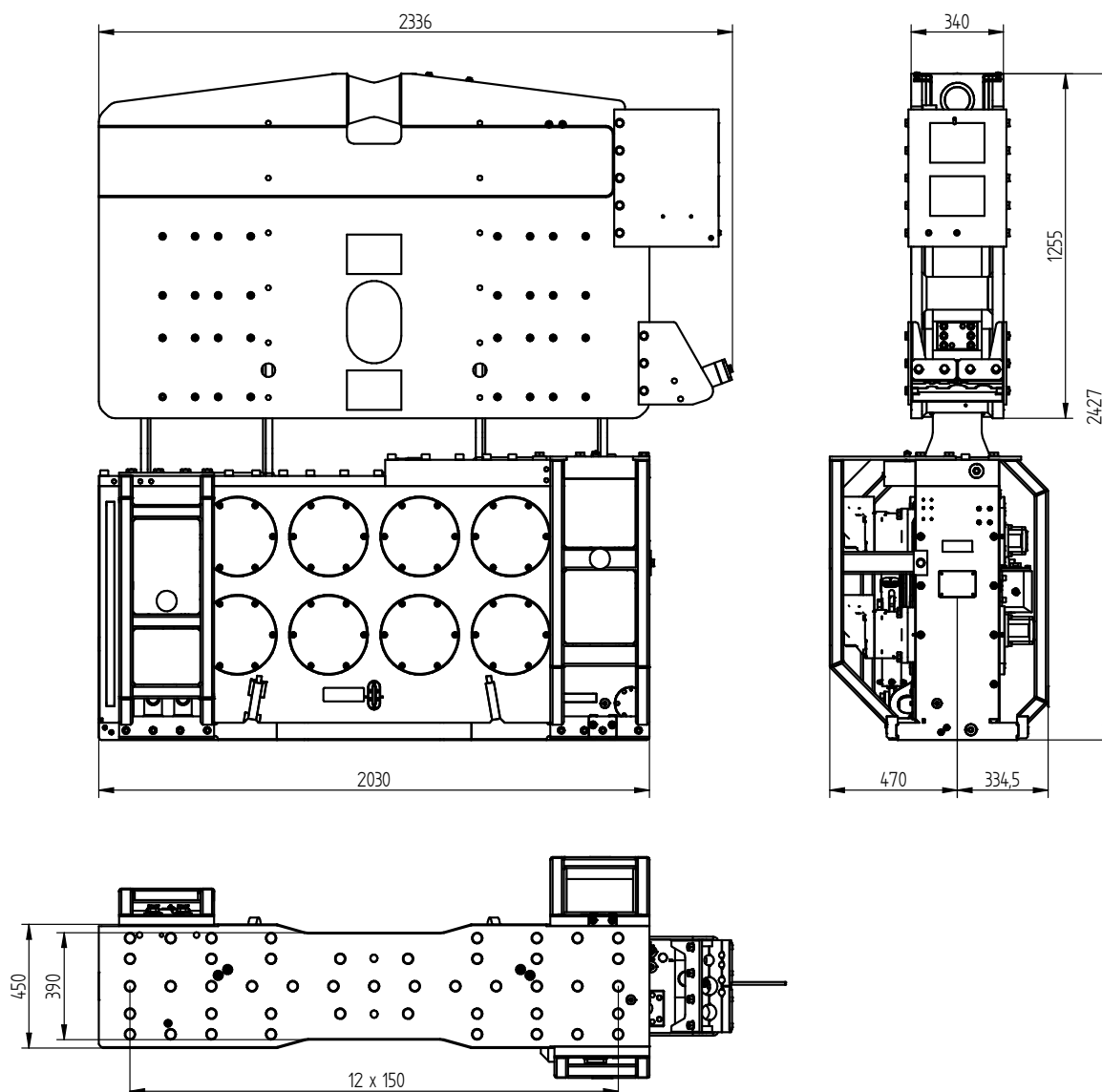
Vibro Hammer

USA

Dimensions in inches



Specifications		PVE 28VM	
Eccentric moment	0-2,431 in-lbs	Clamps:	
Max. centrifugal force	0-180 ton	Sheet pile clamp	200TU-P
Max. frequency	2,300 rpm	Transport weight per piece	4,409 lbs
Max. amplitude excluding 200TU-P	0.55 in	Double clamps	100TC
Max. amplitude including 200TU-P	0.43 in	Transport weight per piece	1,521 lbs
Max. static line-pull	41 ton		
Max. pull-down	15 ton		
Max. operating pressure	5,076 psi	Powerpack:	
Max. oil flow	156 gal/min	Model	600 series
Max. hydraulic power	344/468 kW/HP		
Forced lubrication	yes		
Dynamic weight excluding 200TU-P	7,716 lbs	Hose set:	
Dynamic weight including 200TU-P	12,125 lbs	Length	148 ft
Total weight excluding 200TU-P & hoses	13,007 lbs	Transport weight (±)	2,471 lbs



Specificatii :

PVE 28VM

Moment excentric	0-28 kgm	menghira:	
Forta centrifuga maxima	0-1600 kN	menghina pentru palplanse	200TU-P
Frecventa maxima	2300 rpm	Greutatea de transport pp.	2000 kg
Amplitudine maxima exclusiva. 200TU-P	14 mm	menghina dubla	100TC
Amplitudine maxima inclusivă. 200TU-P	10,8 mm	Greutatea de transport pp.	690 kg
Tractiune maxima statica	400 kN		
Trage în jos maxima	150 kN		
Presiune maxima de lucru	350 bar	generatoare:	
Debit maxim de ulei	590 l/min	Model	600 series
Puterea hidraulică maxima	344/468 kW/HP		
Lubrifiere fortata	da		
Greutatea dinamica exclusiva. 200TU-P	3500 kg	Tip de furtun:	
Greutatea dinamica inclusivă. 200TU-P	5500 kg	Lungimea	45 m
Greutatea totala fara. 200TU-P si funtun	5900 kg	Greutatea de transport (±)	1121 kg