



WOLTMAN 160 PR

WOLTMAN PILING & DRILLING RIGS

Rexroth hydraulics, **120 tons**
pull-up, 51m leader
Drilling configuration possible

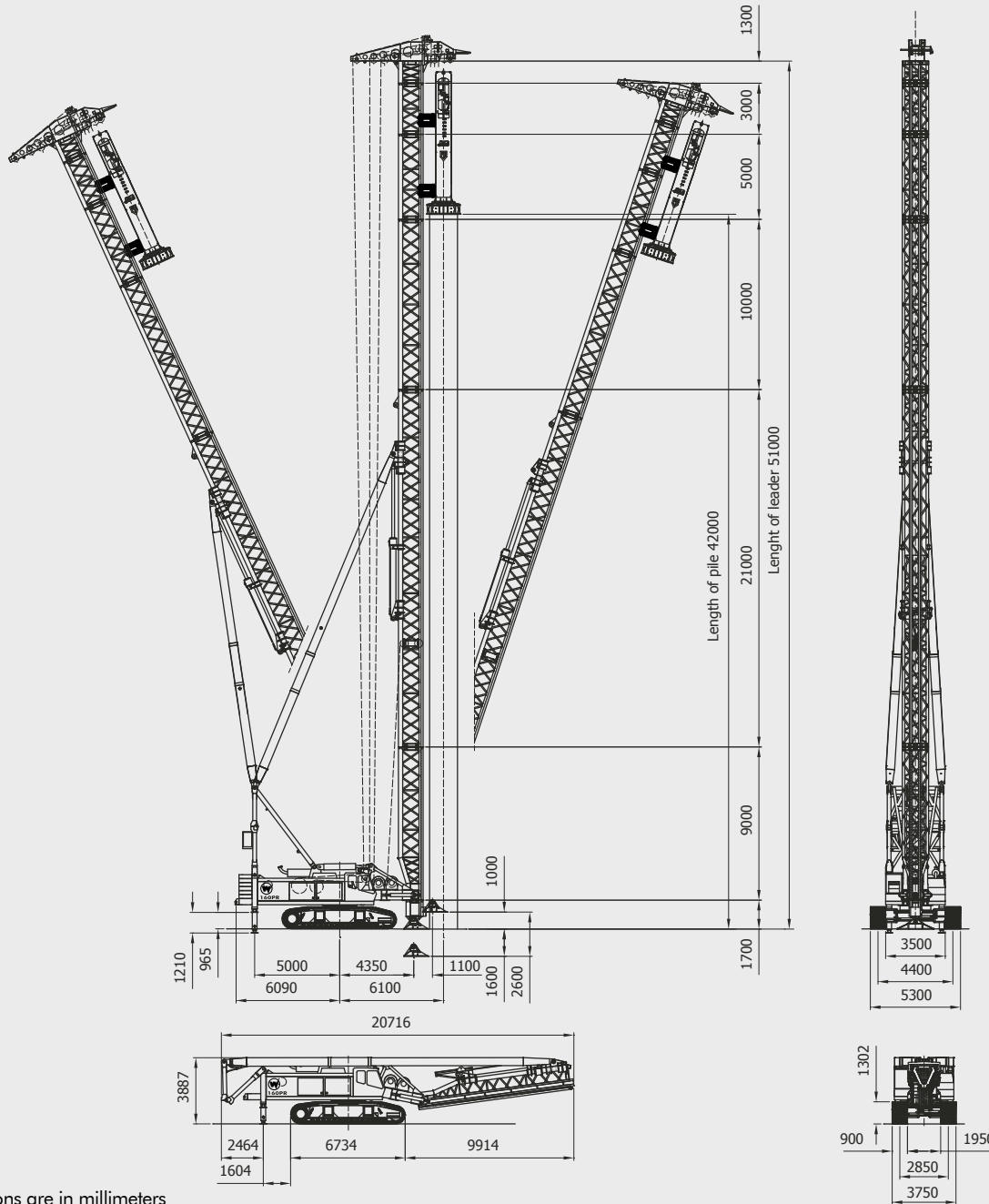
DIESEKO GROUP

WOLTMAN
PILING & DRILLING RIGS

WOLTMAN 160 PR

Woltman is continuously improving their range of equipment. Developments in relation to emission standards and fuel efficiency might result in different specifications. No rights can be attached to the dimensions and specifications mentioned on this leaflet because they might have changed without further notification. All data is subject printing and conversion errors.

TECHNICAL SPECIFICATIONS



All dimensions are in millimeters

Operational specifications

Recommended hammer size	PVE	10/12/14NL		
Max. pile + hammer weight*	ton	60	lbs	132,277
Leader length std. (max.)	mtr	46 (51)	ft	150.9 (167.3)
Max. pile length (max.)	mtr	37,5 (42,5)	ft	123.0 (139.4)
Hammer winch	ton	30 (15x2)	lbs	66,139
Pile winch	ton	30 (15x2)	lbs	66,139
Aux. Winch 1	ton	10	lbs	22,046
Sheaving winch	ton	4	lbs	8,818
Operational weight incl. 10NL	ton	200	lbs	440,924
Max. oil flow	l/min	390	g/min	103
Max. pressure	bar	320	psi	4,641

Weights

Tranport weight w/o counterweight	ton	110	lbs	242,508
Tr. weight w/o tracks & counterweight	ton	85	lbs	187,393
Transport weight per track drive	ton	13	lbs	28,660
Total counterweight	ton	34,5	lbs	76,059

Rig specifications

Engine	Caterpillar C9.3
Engine output	kW 258 HP 350
Hydraulics	Bosch Rexroth
Hydraulic system	Openloop

* subject to capacity charts

Woltman Piling and Drilling Rigs B.V. Everdenberg 17 4902 TT Oosterhout The Netherlands
T +31 (0)184 - 425 949 F +31 (0)184 - 424 820 I www.woltmanrigs.com E info@woltmanrigs.com

Member of
DIESEKO GROUP